

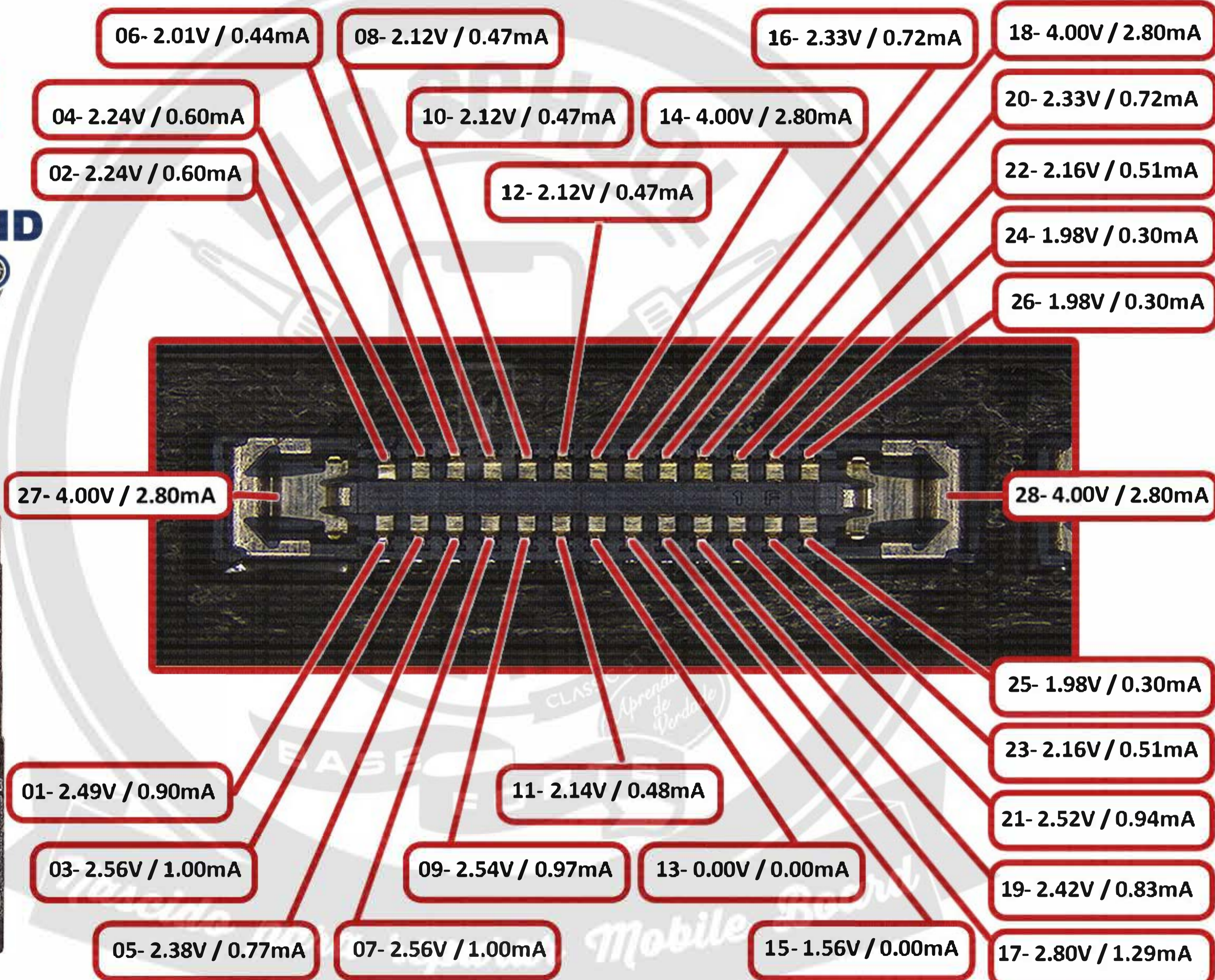
ALS/Receiver - APPLE IPHONE 14 - SMB

SMB - 20V / 20mA

CALIBRAÇÃO

4.00V / 2.80mA

GND



Dock Connector - APPLE IPHONE 14 - SMB

SMB - 20V / 20mA

CALIBRAÇÃO

4.00V / 2.80mA

GND

08- 2.24V / 0.60mA

10- 2.24V / 0.60mA

18- 1.52V / 0.00mA

20- 2.53V / 0.96mA

06- 2.14V / 0.48mA

12- 2.24V / 0.60mA

16- 4.00V / 2.80mA

22- 2.24V / 0.60mA

04- 2.14V / 0.48mA

14- 4.00V / 2.80mA

24- 2.21V / 0.57mA

02- 2.21V / 0.57mA

26- 2.14V / 0.49mA

28- 2.14V / 0.49mA

29- 1.81V / 0.13mA

30- 4.00V / 2.80mA

01- 0.01V / 0.00mA

27- 1.44V / 0.00mA

25- 1.44V / 0.00mA

03- 3.74V / 2.49mA

13- 1.44V / 0.00mA

23- 1.44V / 0.00mA

05- 2.83V / 1.33mA

11- 2.76V / 1.24mA

15- 1.44V / 0.00mA

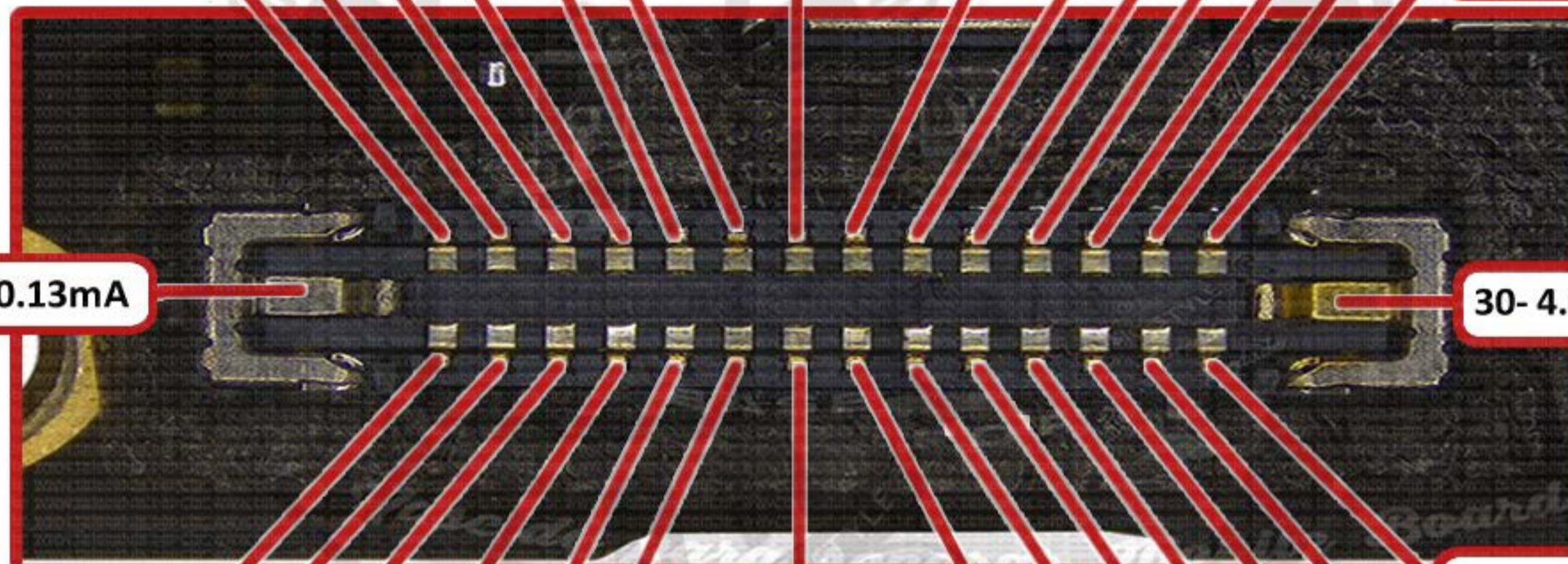
21- 1.44V / 0.00mA

07- 2.52V / 0.95mA

09- 3.97V / 2.79mA

17- 1.44V / 0.00mA

19- 4.00V / 2.80mA



Frontcam - APPLE IPHONE 14 - SMB

SMB - 20V / 20mA

CALIBRAÇÃO

4.00V / 2.80mA

GND



01- 2.55V / 0.97mA

03- 2.55V / 0.97mA

05- 2.42V / 0.77mA

07- 2.38V / 0.77mA

09- 2.51V / 0.94mA

11- 2.56V / 0.99mA

13- 2.56V / 0.99mA

15- 2.49V / 0.91mA

02- 2.56V / 0.99mA

04- 4.00V / 2.80mA

06- 0.00V / 0.00mA

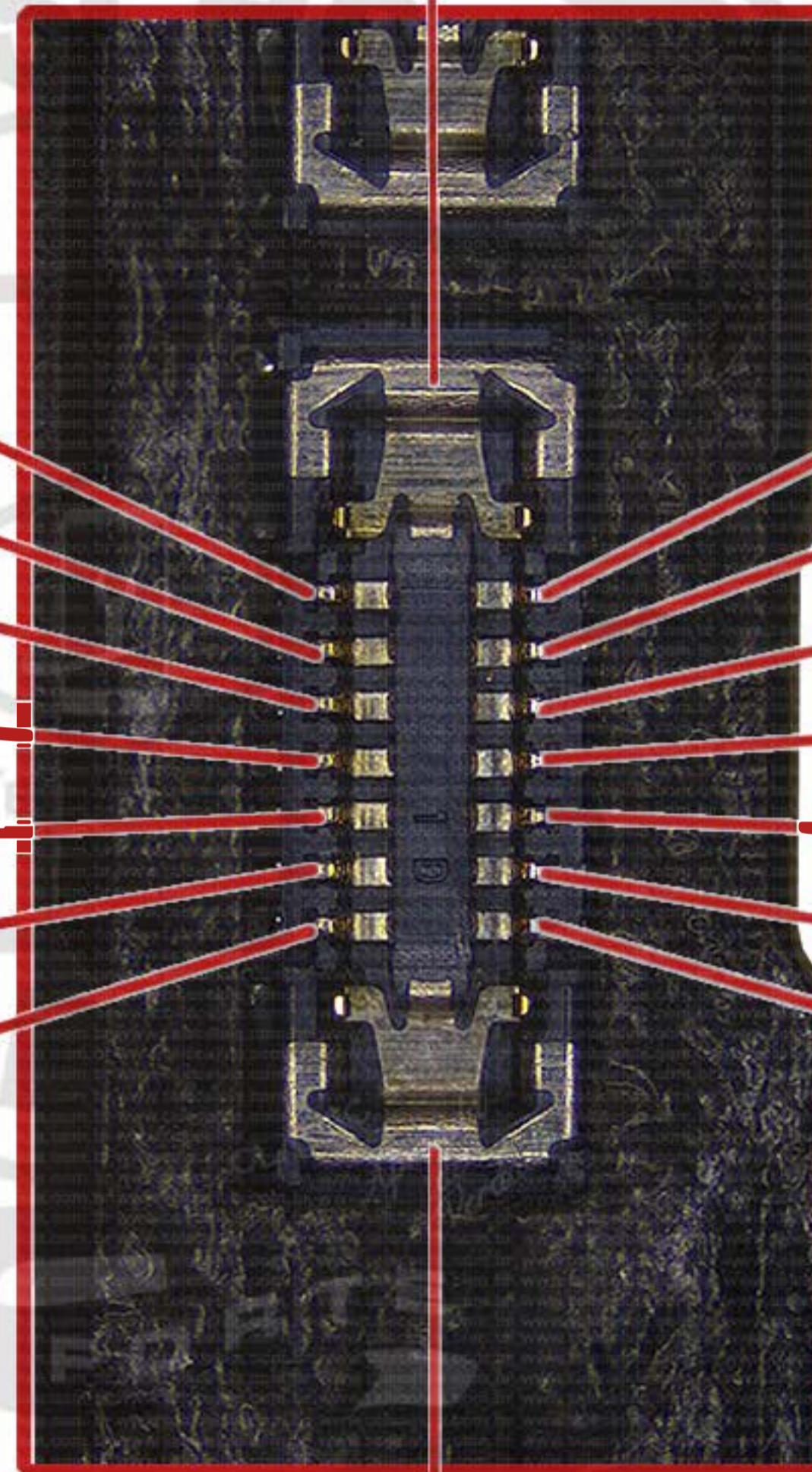
08- 0.00V / 0.00mA

10- 4.00V / 2.80mA

10- 0.00V / 0.00mA

12- 0.00V / 0.00mA

16- 4.00V / 2.80mA



Mascido para reparar Mobile Board

Lower Ant - APPLE IPHONE 14 - SMB

SMB - 20V / 20mA

CALIBRAÇÃO

4.00V / 2.80mA

GND

04- 3.72V / 2.47mA

06- 4.00V / 2.80mA

12- 4.00V / 2.80mA

02- 3.72V / 2.47mA

08- 4.00V / 2.80mA

10- 1.44V / 0.00mA

14- 3.72V / 2.46mA

15- 4.02V / 2.75mA

16- 4.02V / 2.75mA

18- 4.02V / 2.75mA

17- 4.02V / 2.75mA

01- 4.00V / 2.80mA

07- 4.00V / 2.80mA

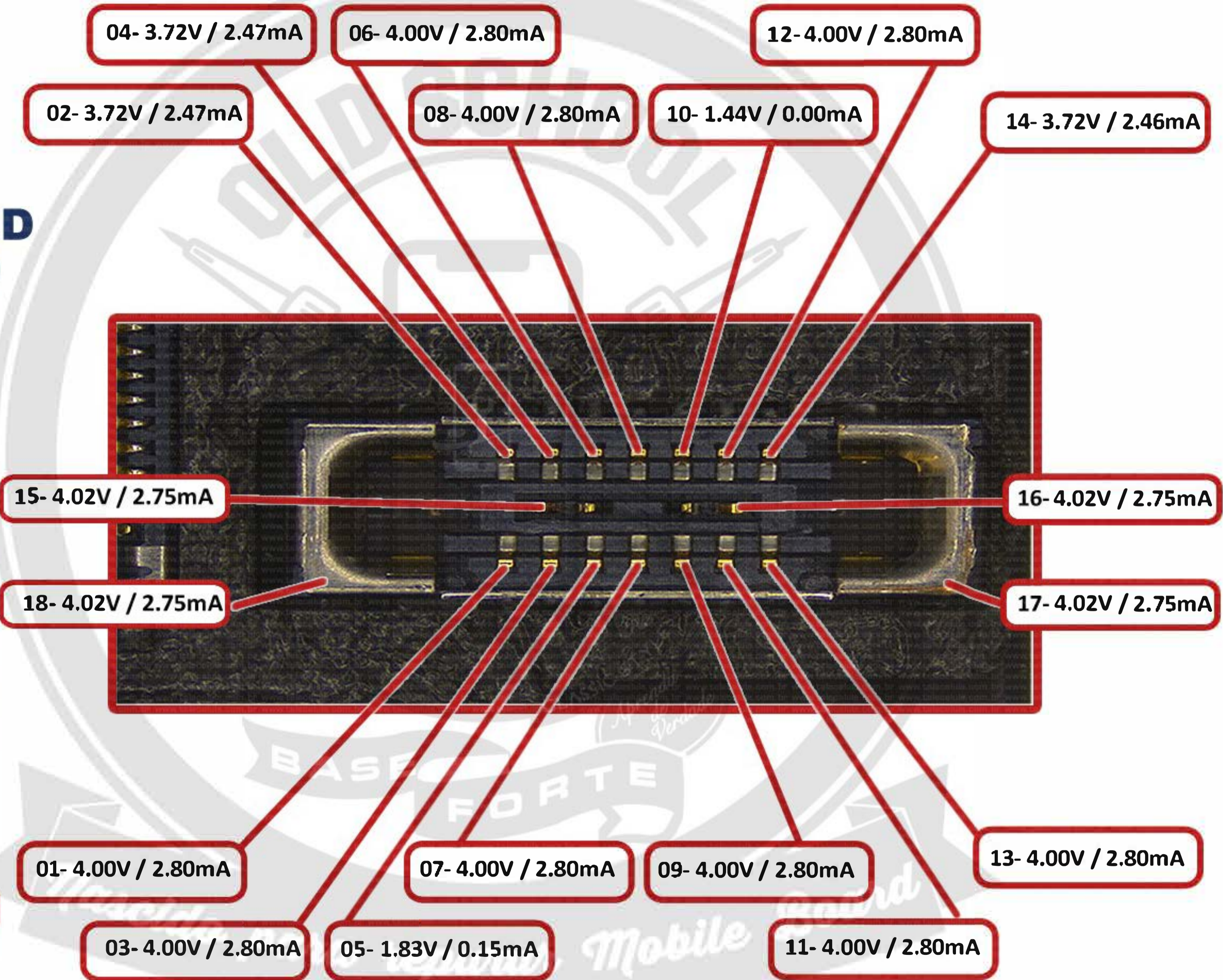
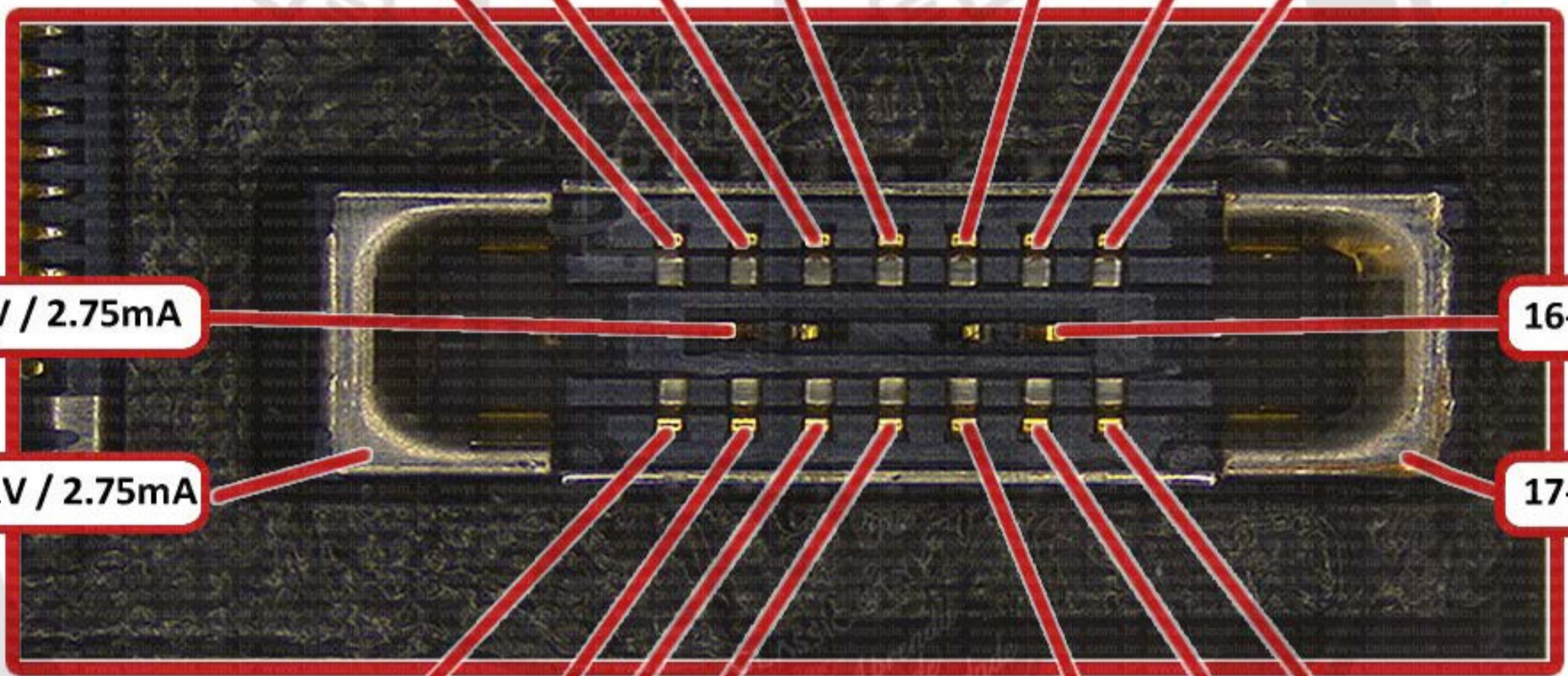
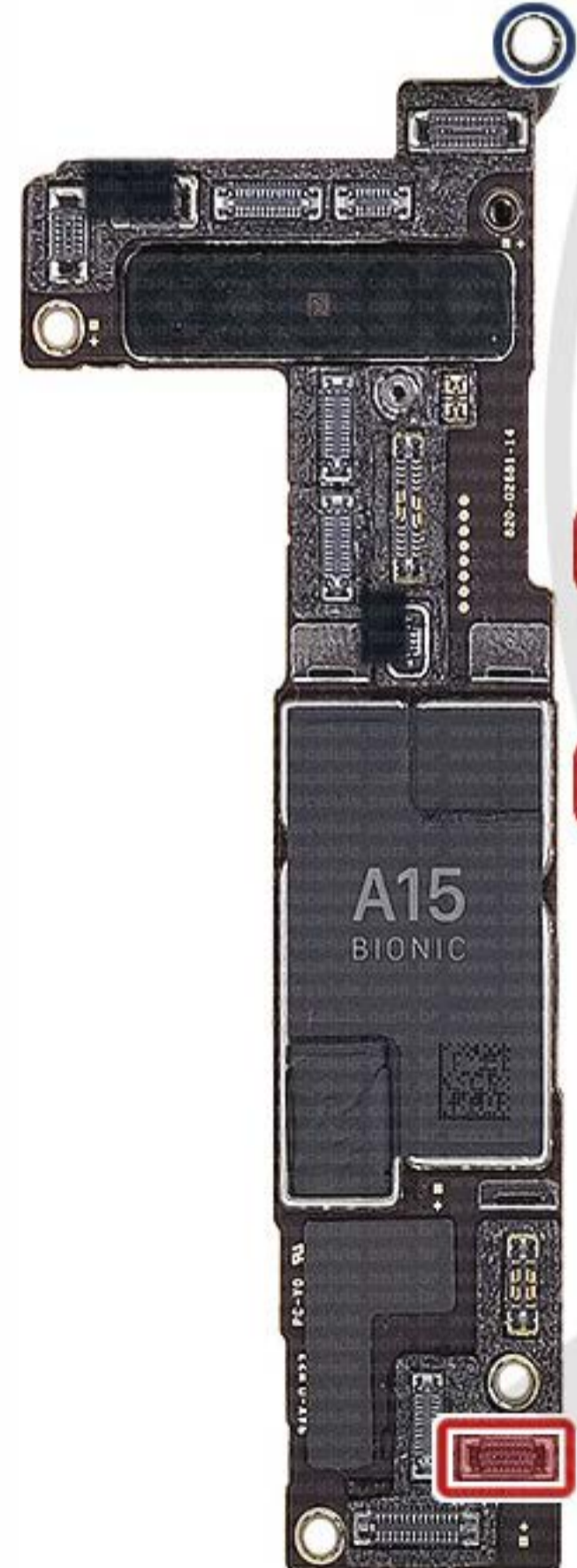
09- 4.00V / 2.80mA

13- 4.00V / 2.80mA

03- 4.00V / 2.80mA

05- 1.83V / 0.15mA

11- 4.00V / 2.80mA



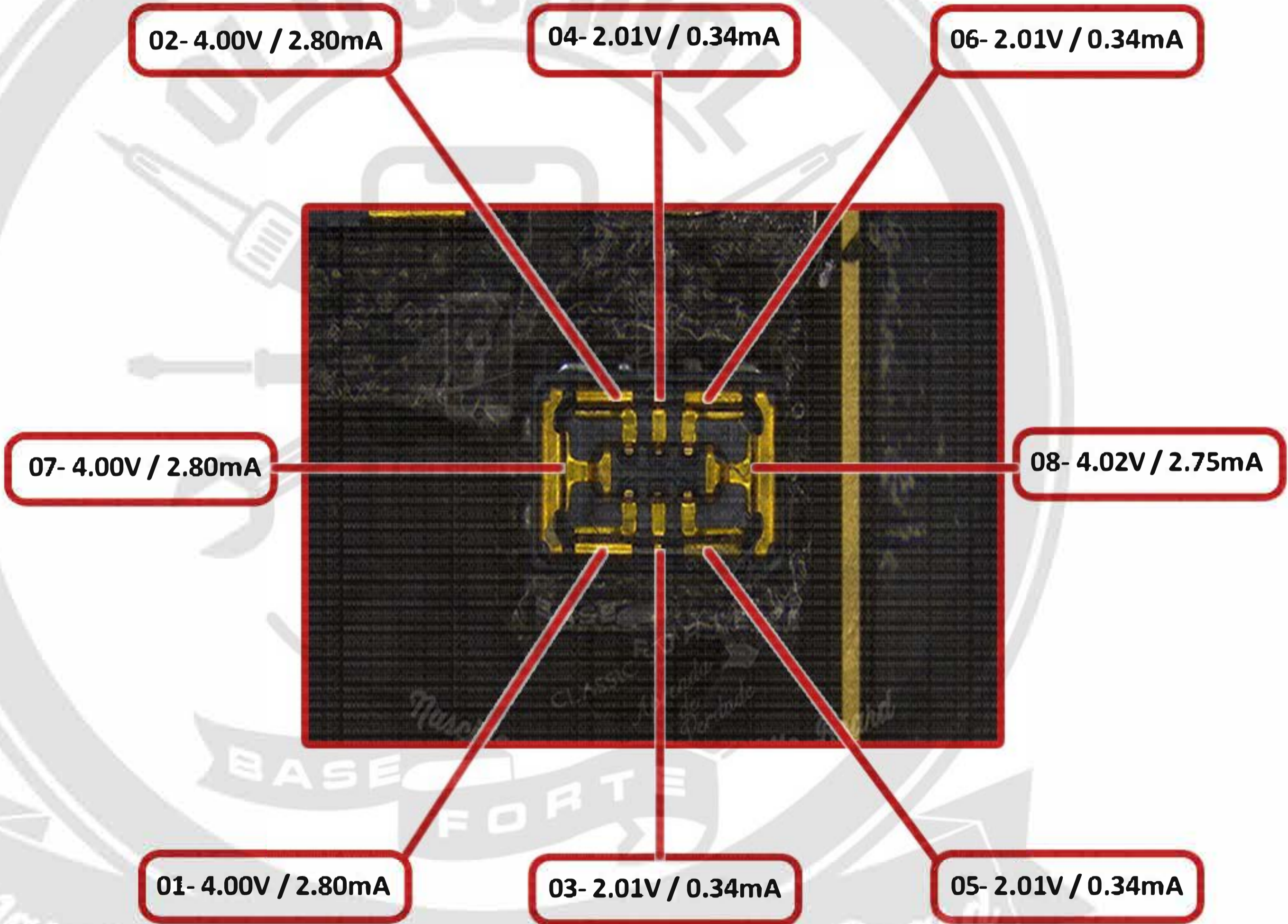
Side Keys - APPLE IPHONE 14 - SMB

SMB - 20V / 20mA

CALIBRAÇÃO

4.00V / 2.80mA

GND



02- 4.00V / 2.80mA

04- 2.01V / 0.34mA

06- 2.01V / 0.34mA

07- 4.00V / 2.80mA

08- 4.02V / 2.75mA

01- 4.00V / 2.80mA

03- 2.01V / 0.34mA

05- 2.01V / 0.34mA

Tele Camera - APPLE IPHONE 14 - SMB

SMB - 20V / 20mA

CALIBRAÇÃO

4.00V / 2.80mA

GND



01- 2.70V / 1.17mA

03- 2.70V / 1.17mA

05- 2.54V / 0.97mA

07- 2.56V / 1.00mA

09- 4.00V / 2.80mA

11- 2.43V / 0.84mA

13- 0.00V / 0.00mA

15- 2.38V / 0.77mA

17- 2.38V / 0.77mA

19- 2.49V / 0.92mA

21- 2.49V / 0.92mA

23- 4.00V / 2.80mA

02- 0.00V / 0.00mA

04- 0.00V / 0.00mA

06- 4.00V / 2.80mA

08- 0.00V / 0.00mA

10- 0.00V / 0.00mA

12- 4.00V / 2.80mA

14- 0.00V / 0.00mA

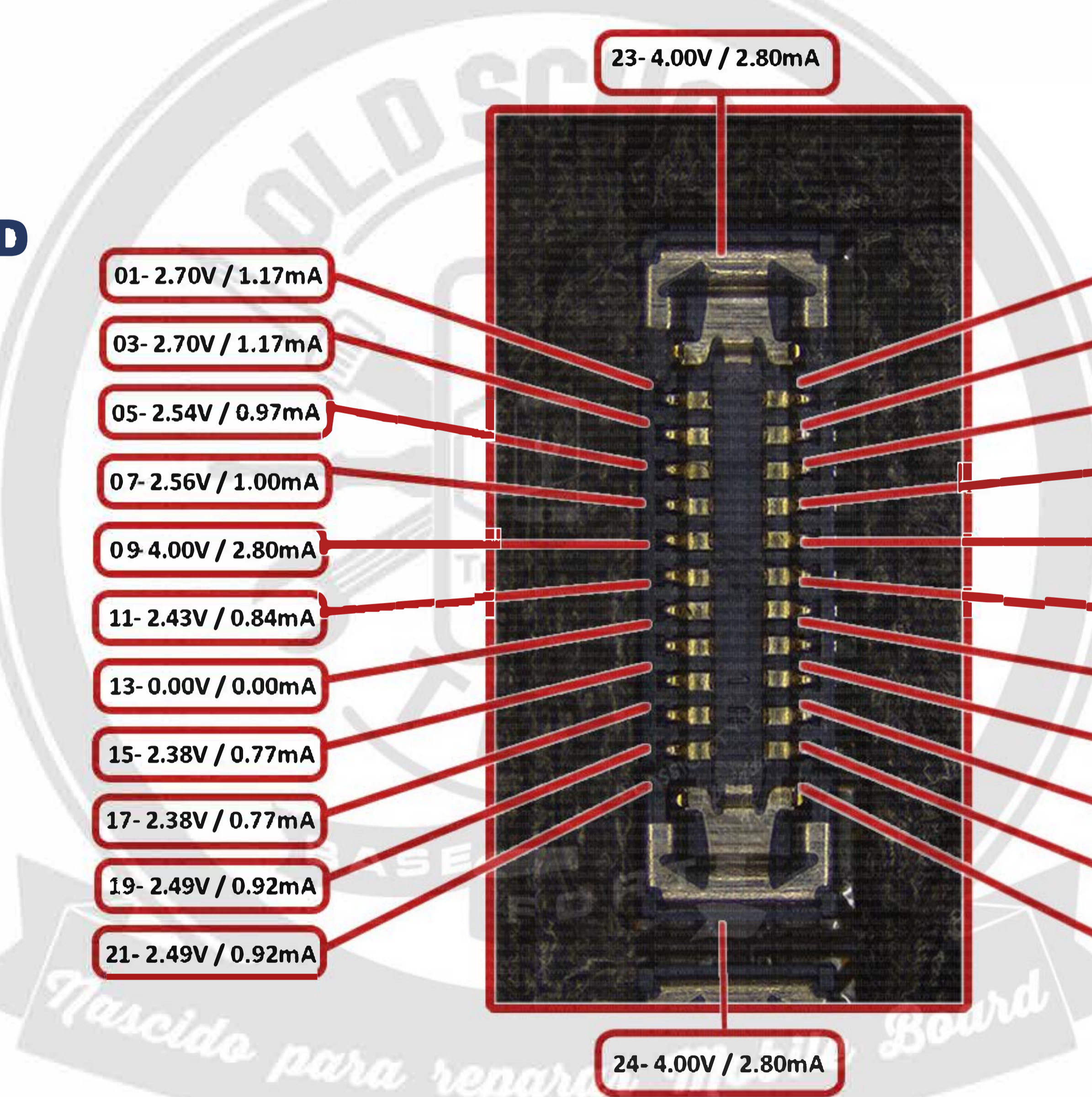
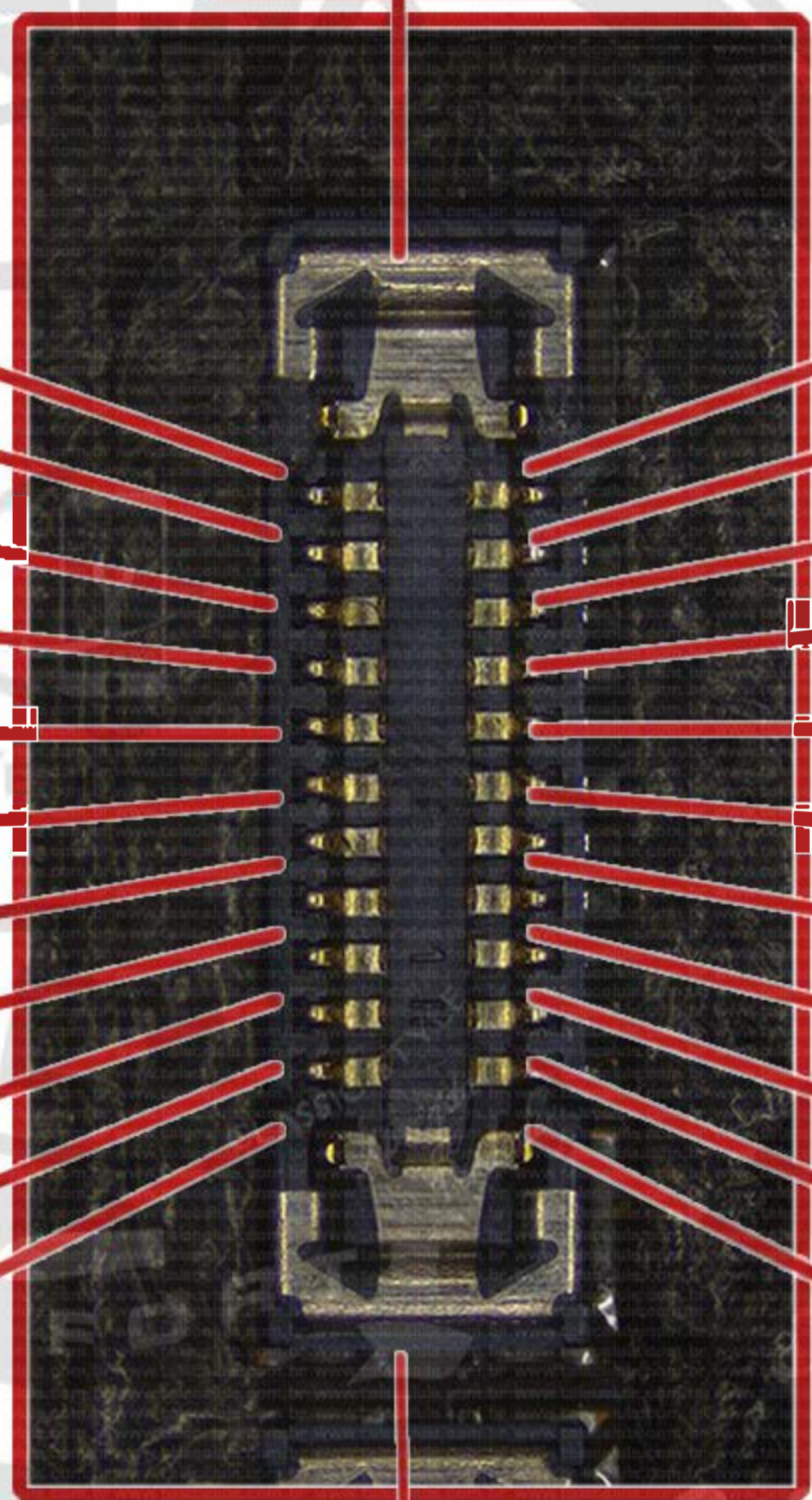
16- 0.00V / 0.00mA

18- 4.00V / 2.80mA

20- 2.34V / 0.73mA

22- 2.57V / 1.01mA

24- 4.00V / 2.80mA



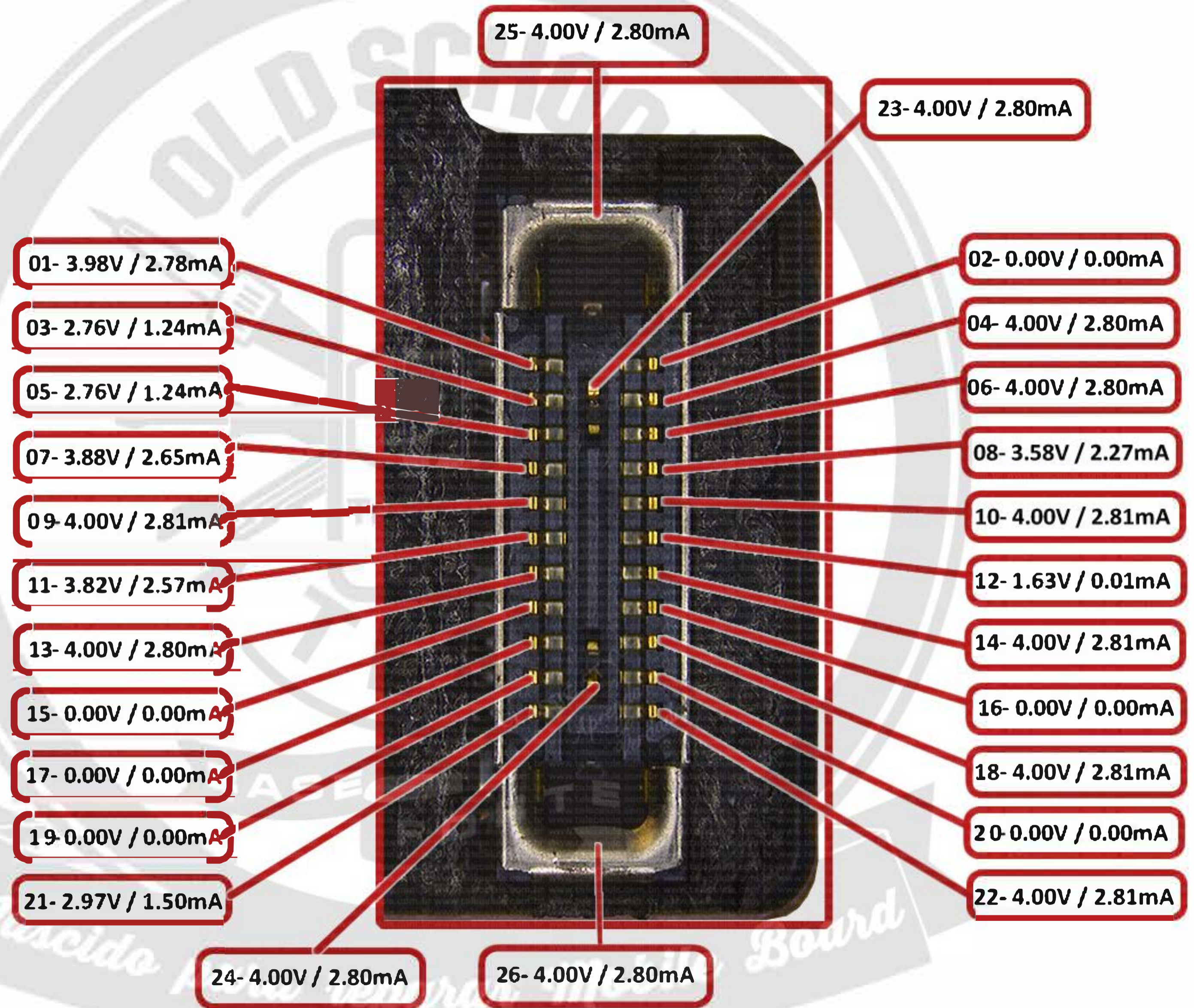
Upper Ant 1 - APPLE IPHONE 14 - SMB

5MB - 20V / 20mA

CALIBRAÇÃO

4.00V / 2.80mA

GND



Upper Ant 2 - APPLE IPHONE 14 - SMB

SMB - 20V / 20mA

CALIBRAÇÃO

4.00V / 2.80mA

GND

04- 4.00V / 2.80mA

10- 0.00V / 0.00mA

02- 0.00V / 0.00mA

06- 4.00V / 2.80mA

08- 4.00V / 2.80mA

12- 0.00V / 0.00mA

4.00V / 2.80mA

4.00V / 2.80mA

4.00V / 2.80mA

4.00V / 2.80mA

01- 0.03V / 0.00mA

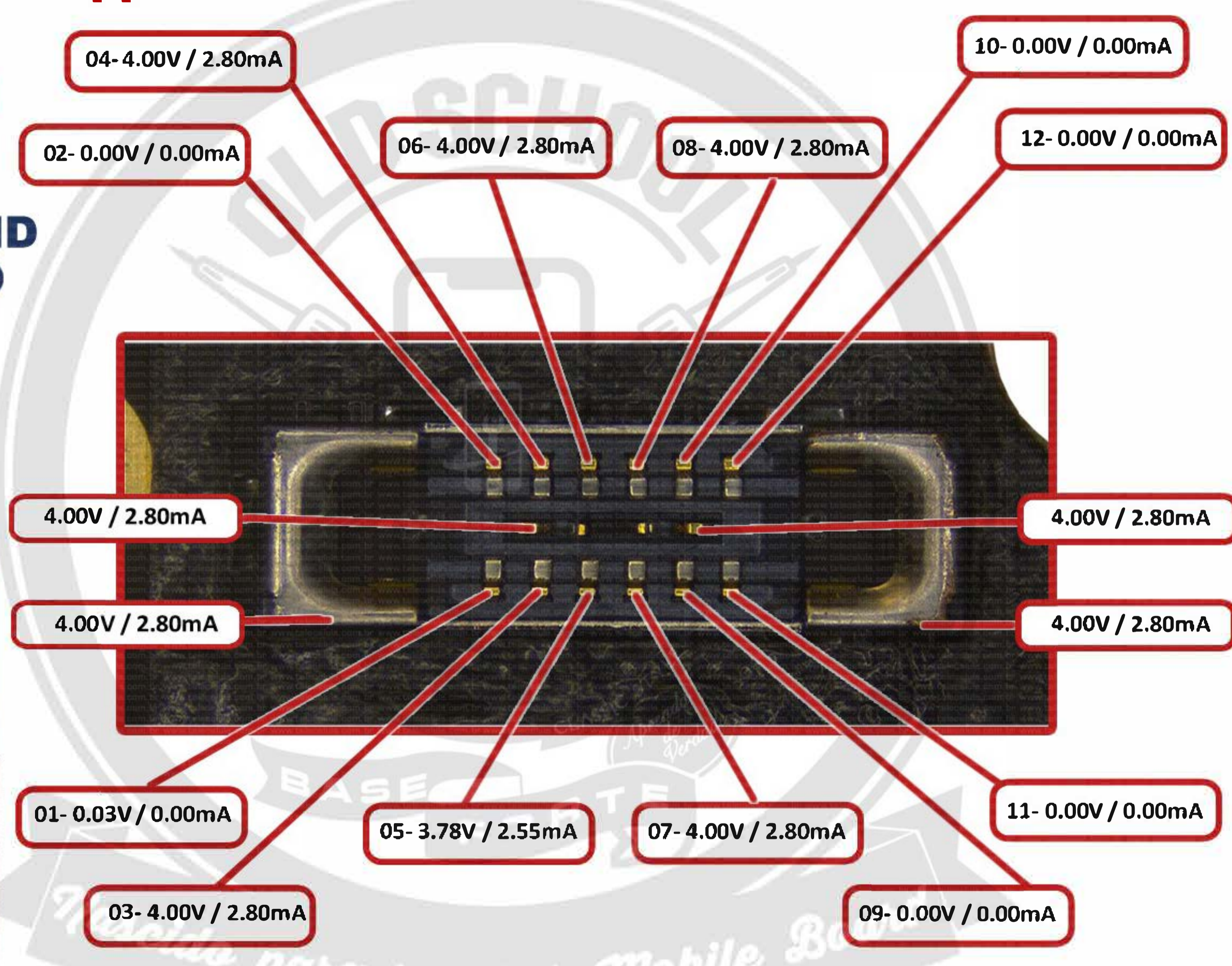
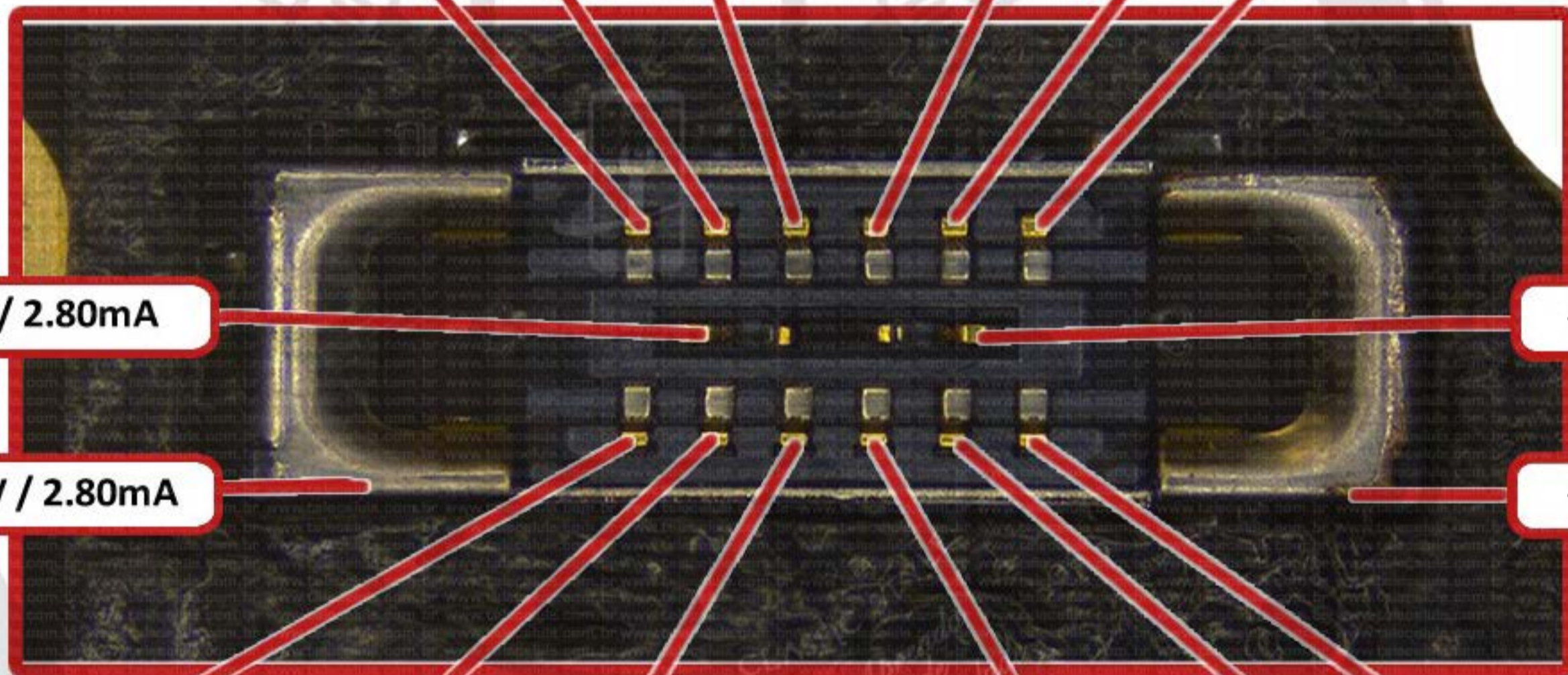
05- 3.78V / 2.55mA

07- 4.00V / 2.80mA

11- 0.00V / 0.00mA

03- 4.00V / 2.80mA

09- 0.00V / 0.00mA



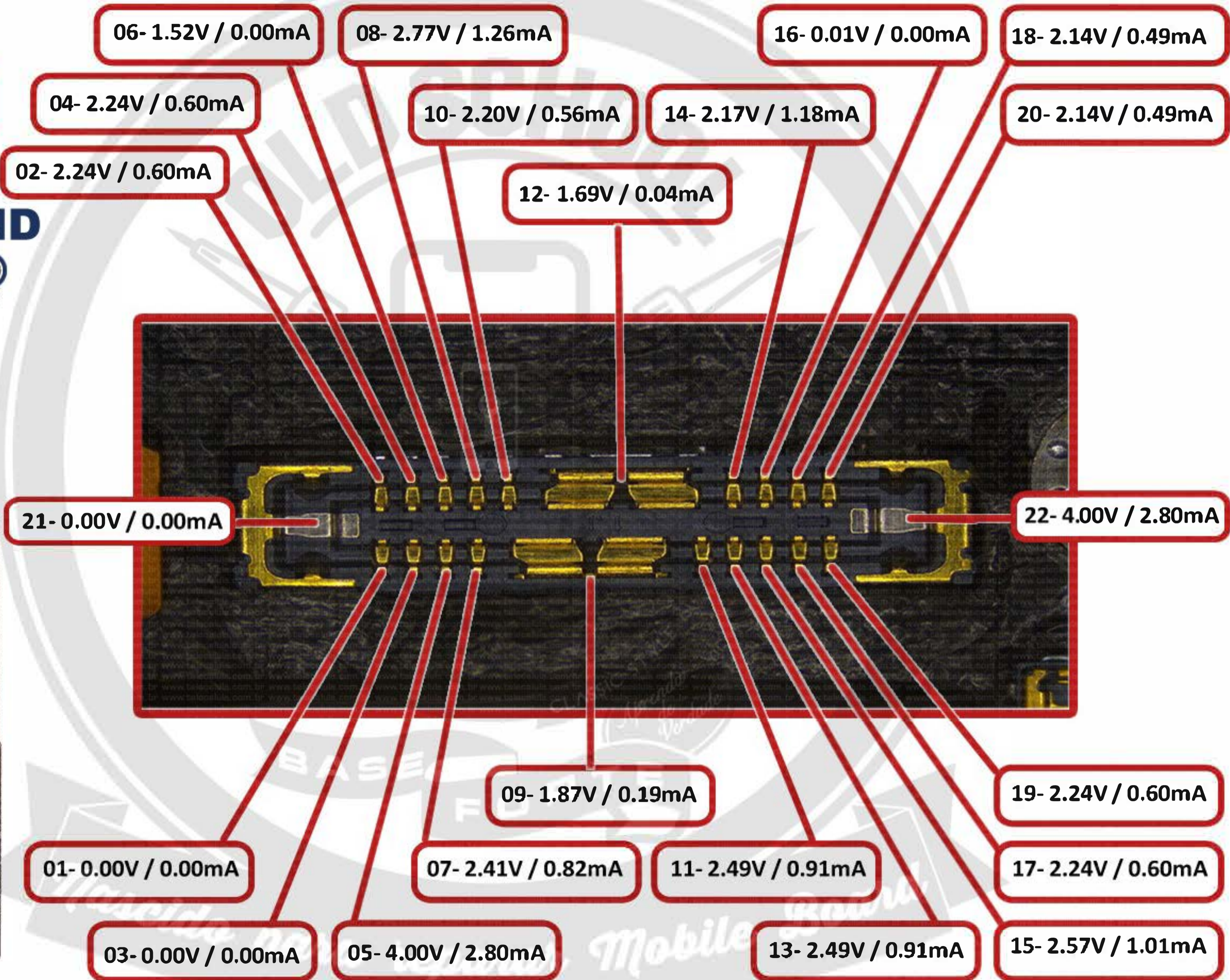
WCHR Strobe - APPLE IPHONE 14 - SMB

SMB - 20V / 20mA

CALIBRAÇÃO

4.00V / 2.80mA

GND



A15
BIONIC

Mobile

Wide Cam - APPLE IPHONE 14 - SMB

SMB - 20V / 20mA

CALIBRAÇÃO

4.00V / 2.80mA

GND



01- 2.48V / 0.90mA

03- 2.56V / 1.00mA

05- 4.00V / 2.80mA

07- 0.00V / 0.00mA

09- 4.00V / 2.80mA

11- 2.38V / 0.77mA

13- 2.38V / 0.77mA

15- 2.43V / 0.84mA

17- 4.00V / 2.80mA

19- 2.54V / 0.97mA

21- 2.48V / 0.91mA

23- 2.95V / 1.49mA

02- 2.50V / 0.92mA

04- 2.57V / 1.01mA

06- 4.00V / 2.80mA

08- 0.00V / 0.00mA

10- 0.00V / 0.00mA

12- 4.00V / 2.80mA

14- 0.00V / 0.00mA

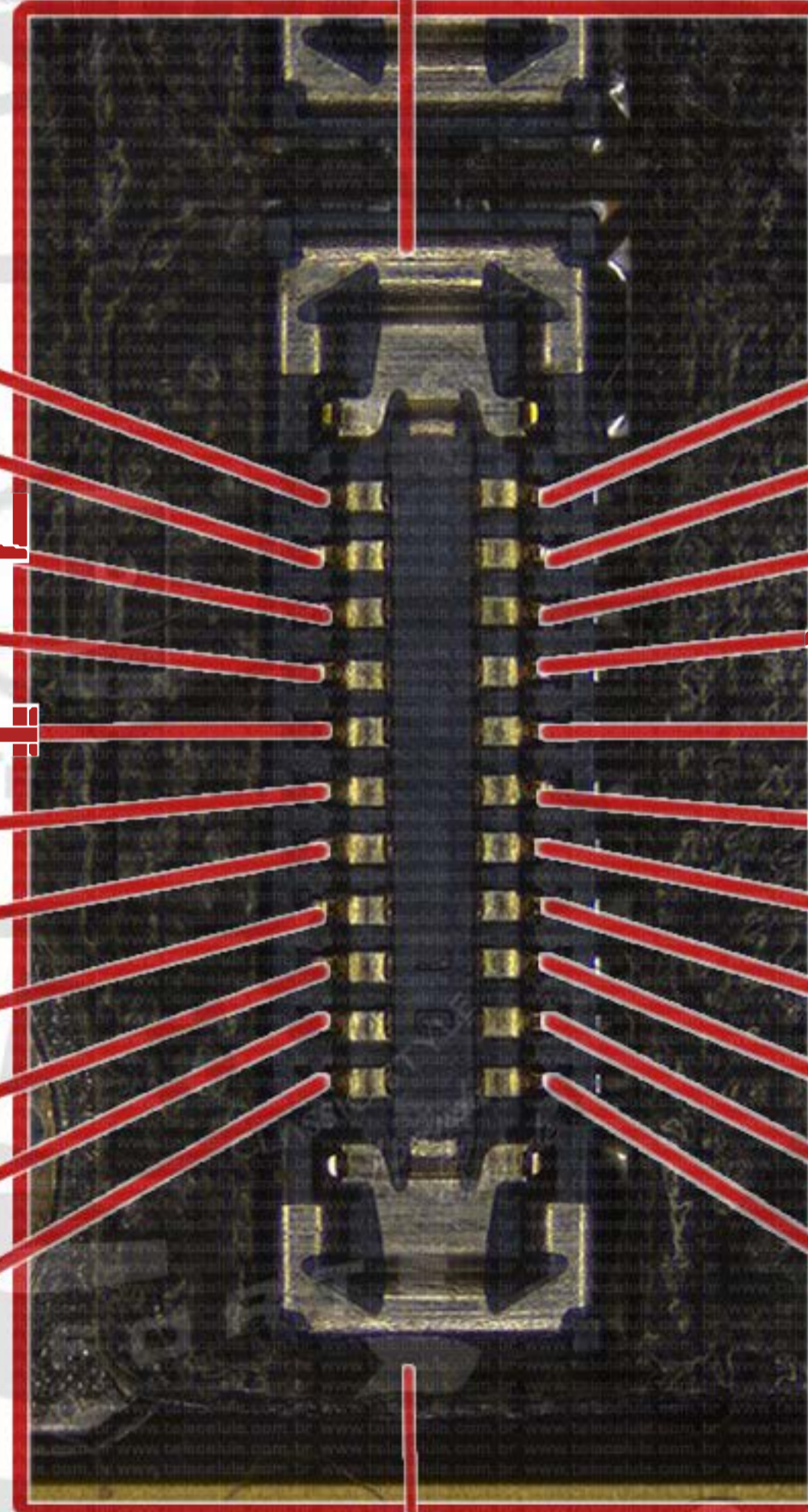
16- 0.00V / 0.00mA

18- 4.00V / 2.80mA

20- 0.00V / 0.00mA

22- 0.00V / 0.00mA

24- 4.00V / 2.80mA



Mascido para reparar a placa Board