

ALS/Receiver - APPLE IPHONE 14 - SMB

SMB - 20V / 20mA

CALIBRAÇÃO

4.00V / 2.80mA

GND

06- 2.01V / 0.44mA

08- 2.12V / 0.47mA

16- 2.33V / 0.72mA

18- 4.00V / 2.80mA

04- 2.24V / 0.60mA

10- 2.12V / 0.47mA

14- 4.00V / 2.80mA

20- 2.33V / 0.72mA

02- 2.24V / 0.60mA

12- 2.12V / 0.47mA

22- 2.16V / 0.51mA

24- 1.98V / 0.30mA

26- 1.98V / 0.30mA

27- 4.00V / 2.80mA

28- 4.00V / 2.80mA

25- 1.98V / 0.30mA

23- 2.16V / 0.51mA

21- 2.52V / 0.94mA

19- 2.42V / 0.83mA

01- 2.49V / 0.90mA

11- 2.14V / 0.48mA

17- 2.80V / 1.29mA

03- 2.56V / 1.00mA

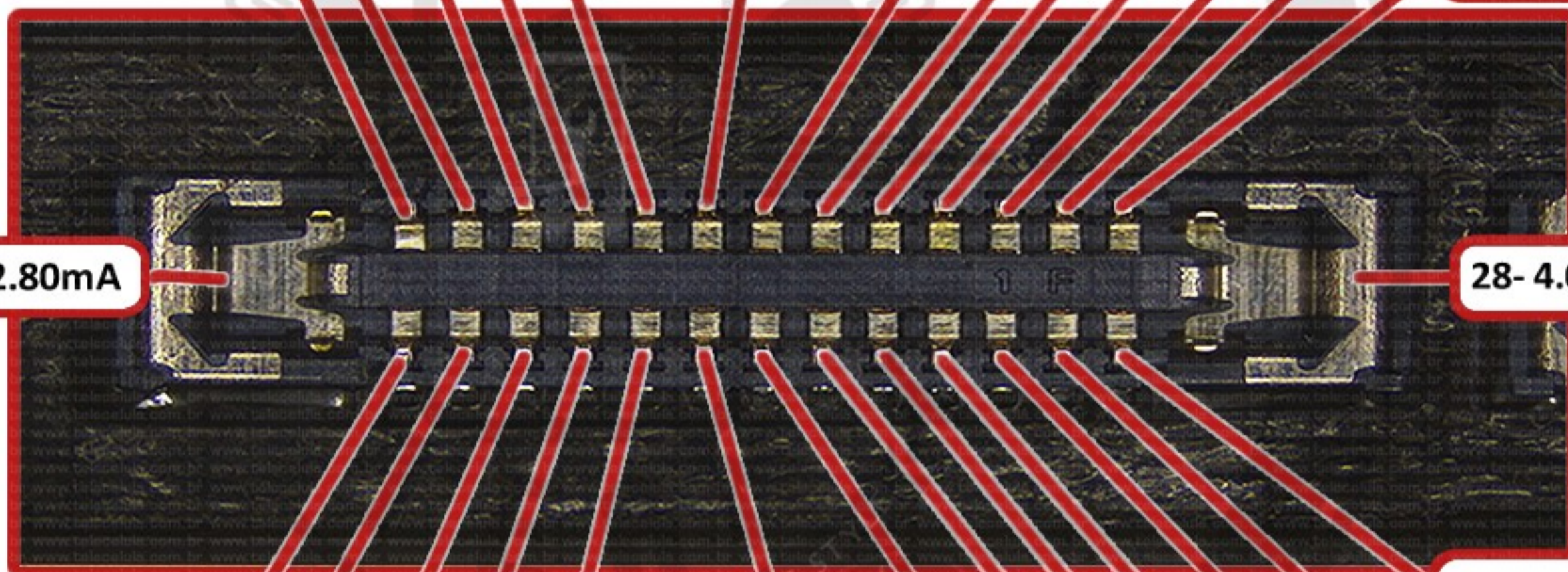
09- 2.54V / 0.97mA

13- 0.00V / 0.00mA

05- 2.38V / 0.77mA

07- 2.56V / 1.00mA

15- 1.56V / 0.00mA



27- 4.00V / 2.80mA

28- 4.00V / 2.80mA

25- 1.98V / 0.30mA

23- 2.16V / 0.51mA

21- 2.52V / 0.94mA

19- 2.42V / 0.83mA

01- 2.49V / 0.90mA

11- 2.14V / 0.48mA

17- 2.80V / 1.29mA

03- 2.56V / 1.00mA

09- 2.54V / 0.97mA

13- 0.00V / 0.00mA

05- 2.38V / 0.77mA

07- 2.56V / 1.00mA

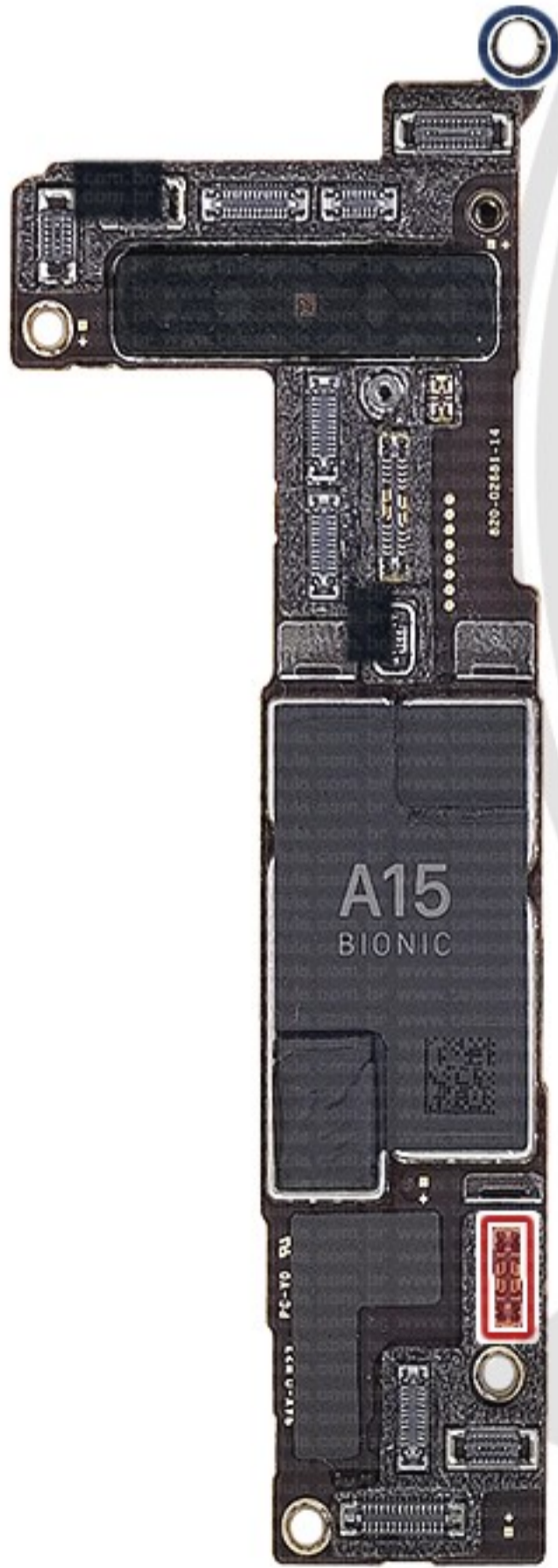
15- 1.56V / 0.00mA

Battery - APPLE IPHONE 14 - SMB

SMB - 20V / 20mA

CALIBRAÇÃO
4.00V / 2.80mA

GND



01- 0.00V / 0.00mA

03- 2.92V / 1.45mA

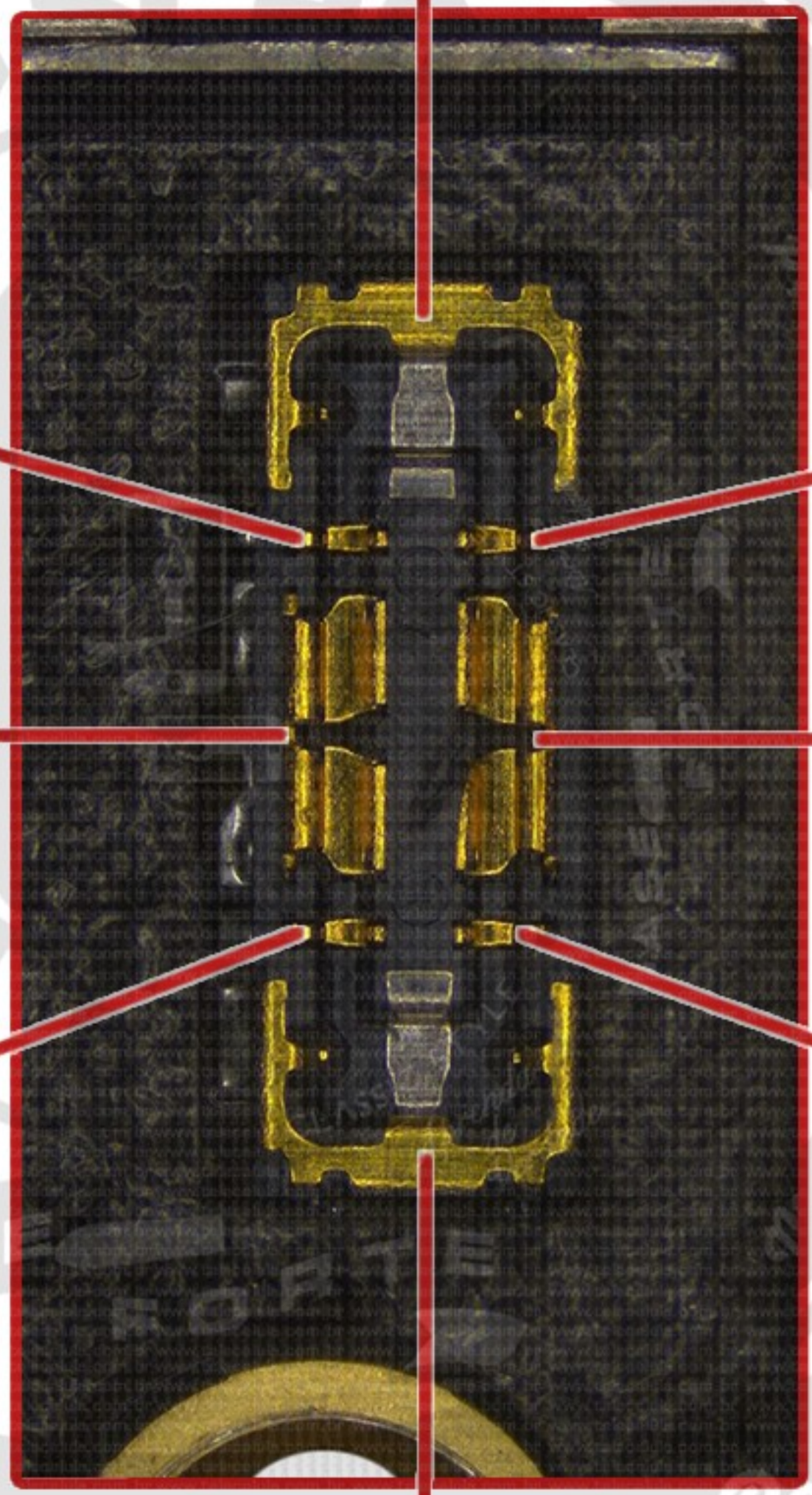
05- 2.92V / 1.45mA

08- 4.00V / 2.80mA

02- 2.12V / 0.46mA

04- 4.00V / 2.80mA

06- 4.00V / 2.80mA



07- 4.00V / 2.80mA

Mascido para reparar Mobile Board

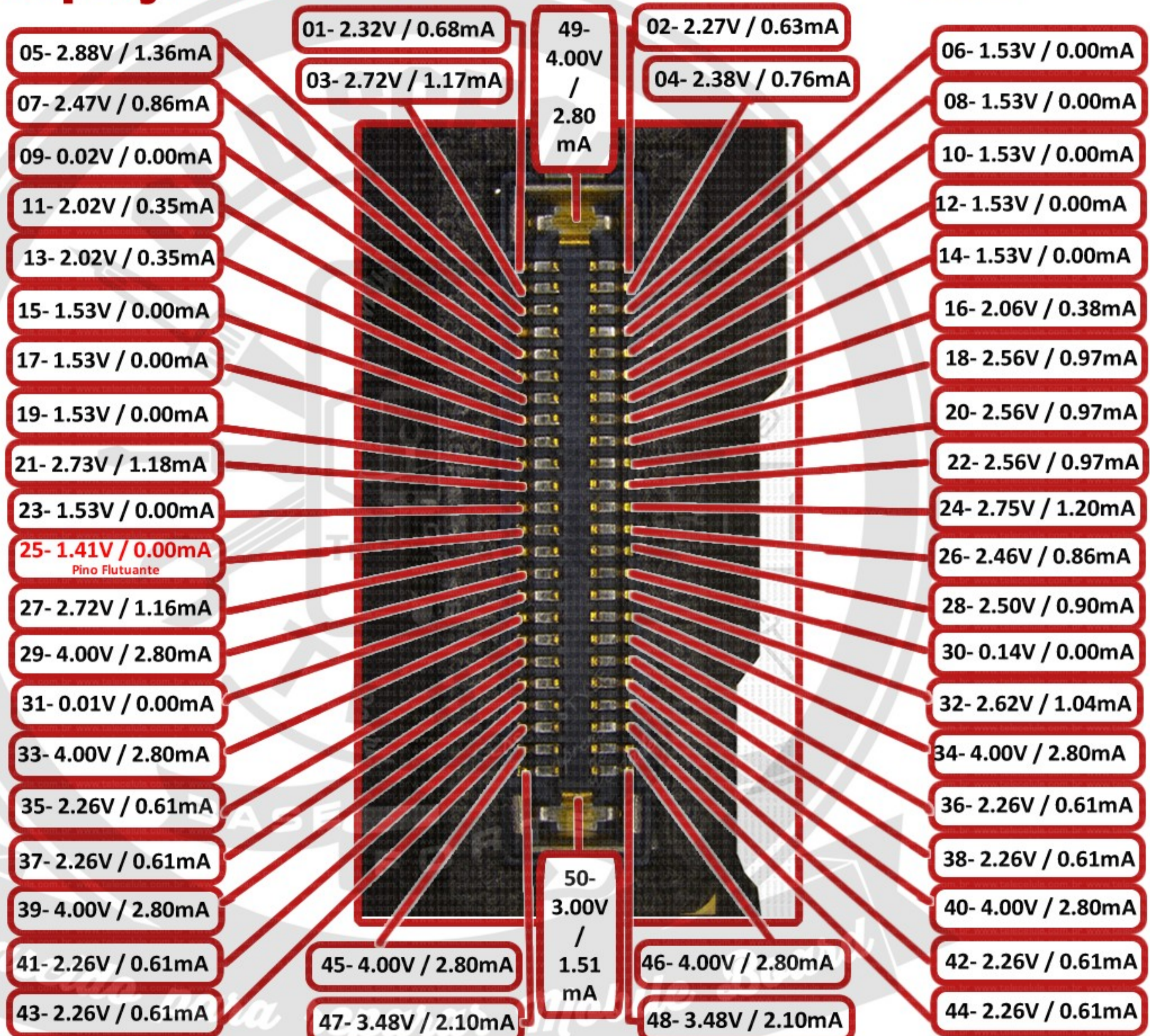
Display/Touch - APPLE IPHONE 14 - SMB

SMB - 20V / 20mA

CALIBRAÇÃO

4.00V / 2.80mA

GND



Pino Flutuante

Dock Connector - APPLE IPHONE 14 - SMB

SMB - 20V / 20mA

CALIBRAÇÃO

4.00V / 2.80mA

GND

08- 2.24V / 0.60mA

10- 2.24V / 0.60mA

18- 1.52V / 0.00mA

20- 2.53V / 0.96mA

06- 2.14V / 0.48mA

12- 2.24V / 0.60mA

16- 4.00V / 2.80mA

22- 2.24V / 0.60mA

04- 2.14V / 0.48mA

14- 4.00V / 2.80mA

24- 2.21V / 0.57mA

02- 2.21V / 0.57mA

26- 2.14V / 0.49mA

28- 2.14V / 0.49mA

29- 1.81V / 0.13mA

30- 4.00V / 2.80mA

01- 0.01V / 0.00mA

27- 1.44V / 0.00mA

25- 1.44V / 0.00mA

03- 3.74V / 2.49mA

13- 1.44V / 0.00mA

23- 1.44V / 0.00mA

05- 2.83V / 1.33mA

11- 2.76V / 1.24mA

15- 1.44V / 0.00mA

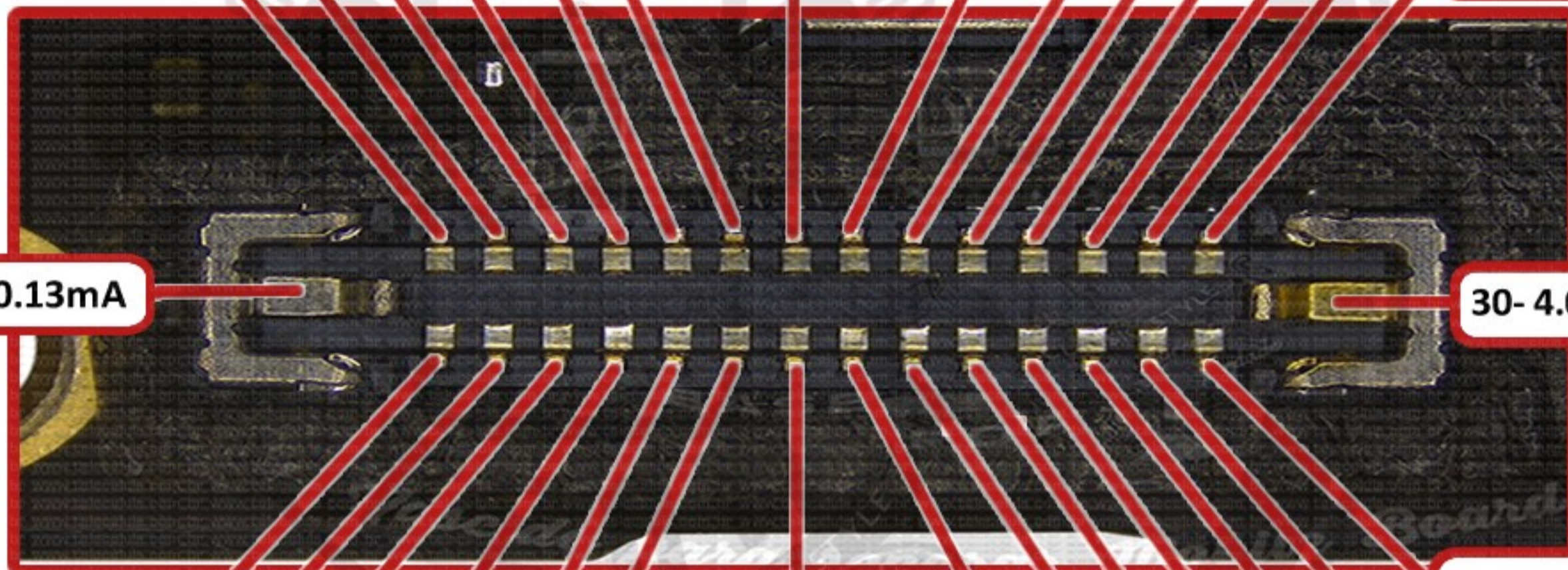
21- 1.44V / 0.00mA

07- 2.52V / 0.95mA

09- 3.97V / 2.79mA

17- 1.44V / 0.00mA

19- 4.00V / 2.80mA



29- 1.81V / 0.13mA

30- 4.00V / 2.80mA

01- 0.01V / 0.00mA

27- 1.44V / 0.00mA

25- 1.44V / 0.00mA

03- 3.74V / 2.49mA

13- 1.44V / 0.00mA

23- 1.44V / 0.00mA

05- 2.83V / 1.33mA

11- 2.76V / 1.24mA

15- 1.44V / 0.00mA

21- 1.44V / 0.00mA

07- 2.52V / 0.95mA

09- 3.97V / 2.79mA

17- 1.44V / 0.00mA

19- 4.00V / 2.80mA

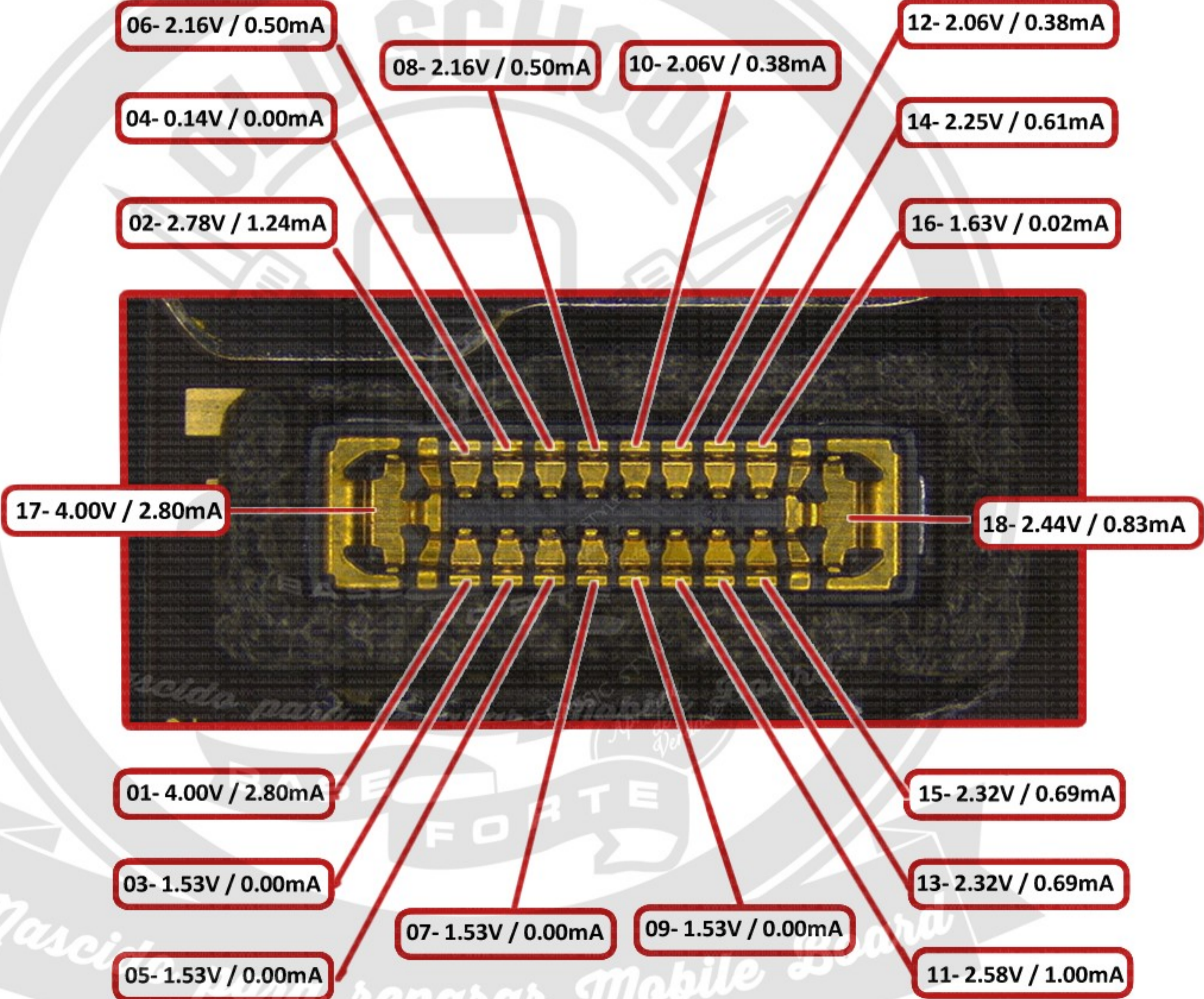
Flood iluminator - APPLE IPHONE 14 - SMB

SMB - 20V / 20mA

CALIBRAÇÃO

4.00V / 2.80mA

GND



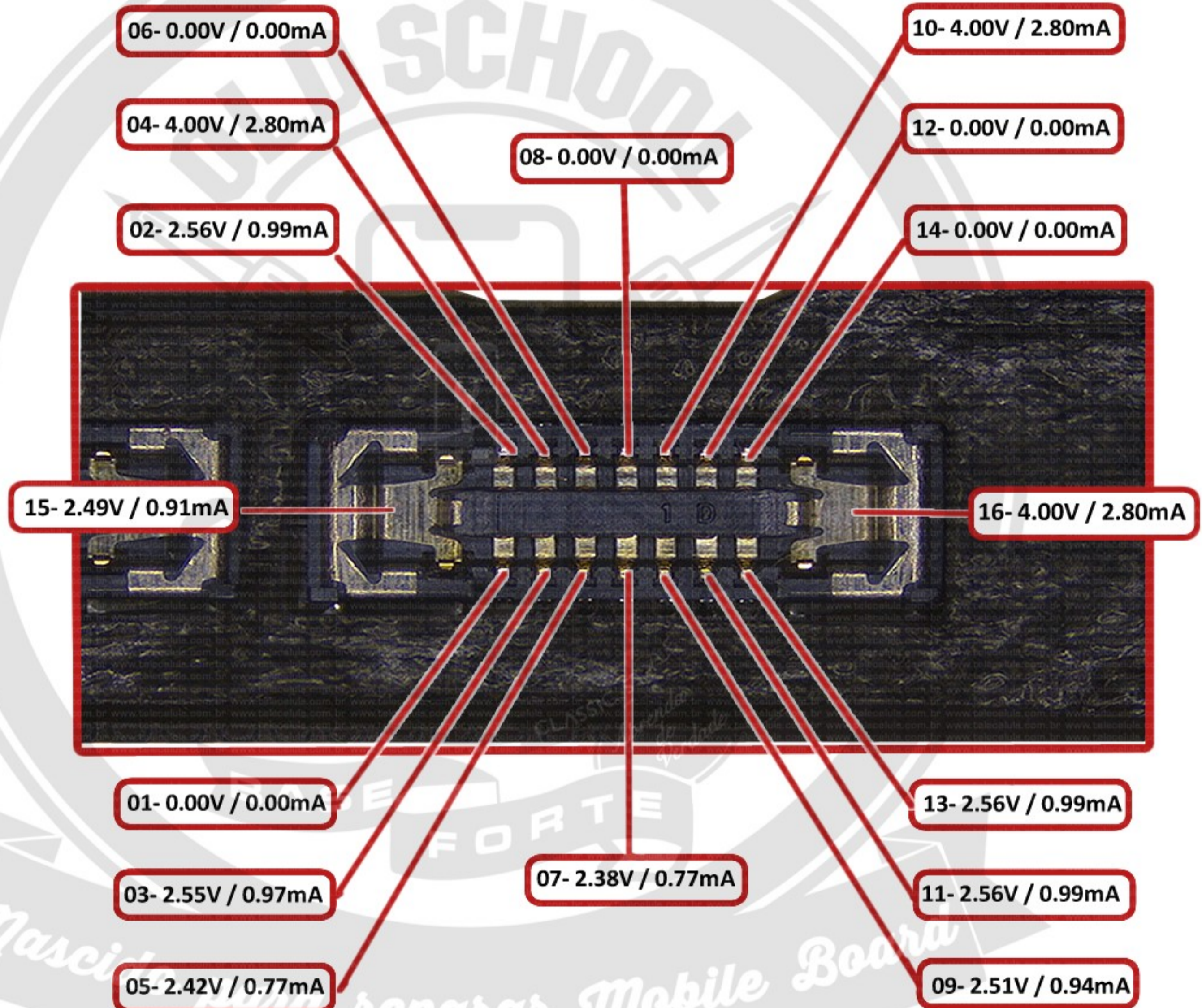
Frontcam - APPLE IPHONE 14 - SMB

SMB - 20V / 20mA

CALIBRAÇÃO

4.00V / 2.80mA

GND



Lower Ant - APPLE IPHONE 14 - SMB

SMB - 20V / 20mA

CALIBRAÇÃO

4.00V / 2.80mA

GND

04- 3.72V / 2.47mA

06- 4.00V / 2.80mA

12- 4.00V / 2.80mA

02- 3.72V / 2.47mA

08- 4.00V / 2.80mA

10- 1.44V / 0.00mA

14- 3.72V / 2.46mA

15- 4.02V / 2.75mA

16- 4.02V / 2.75mA

18- 4.02V / 2.75mA

17- 4.02V / 2.75mA

01- 4.00V / 2.80mA

07- 4.00V / 2.80mA

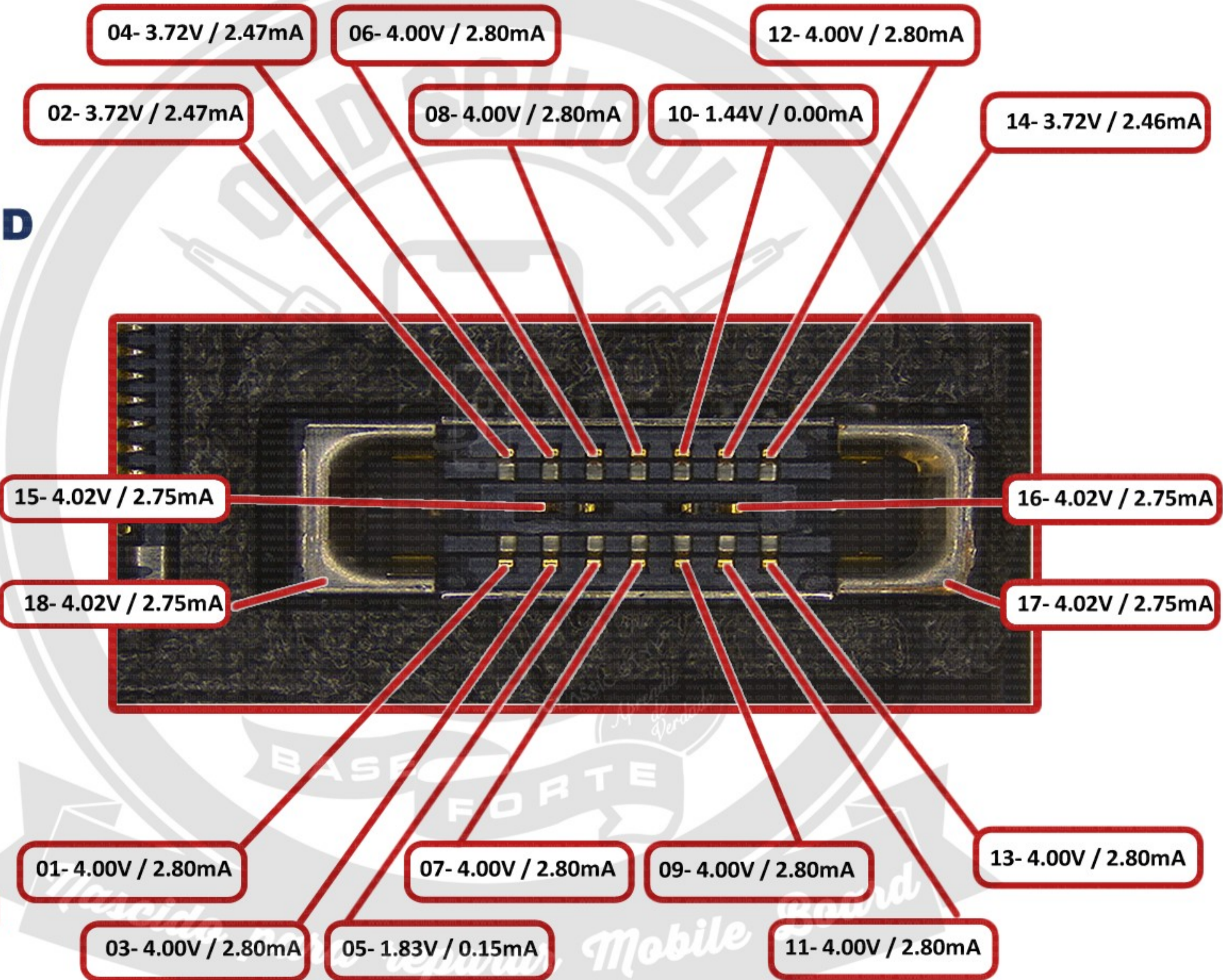
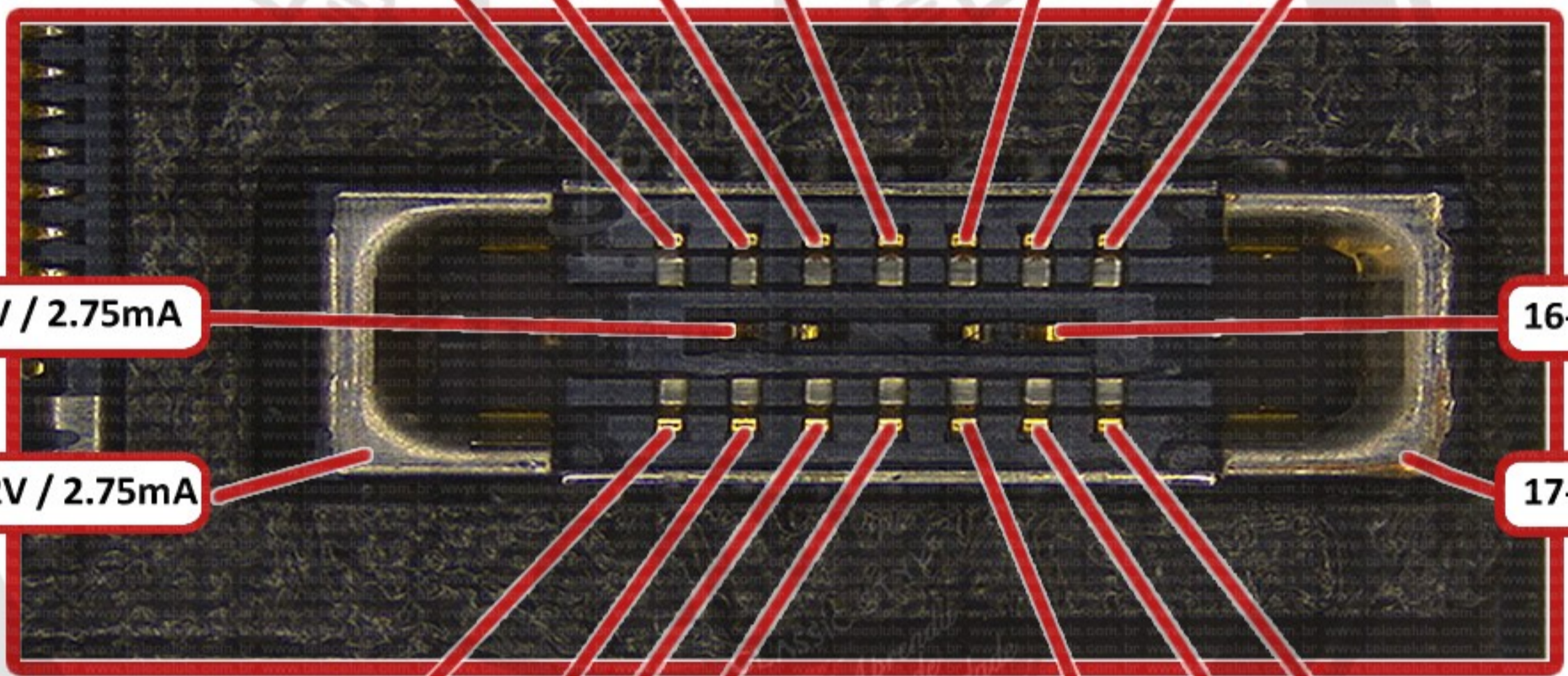
09- 4.00V / 2.80mA

13- 4.00V / 2.80mA

03- 4.00V / 2.80mA

05- 1.83V / 0.15mA

11- 4.00V / 2.80mA



Side Keys - APPLE IPHONE 14 - SMB

SMB - 20V / 20mA

CALIBRAÇÃO

4.00V / 2.80mA

GND



01- 2.01V / 0.34mA

08- 2.01V / 0.34mA

02- 2.01V / 0.34mA

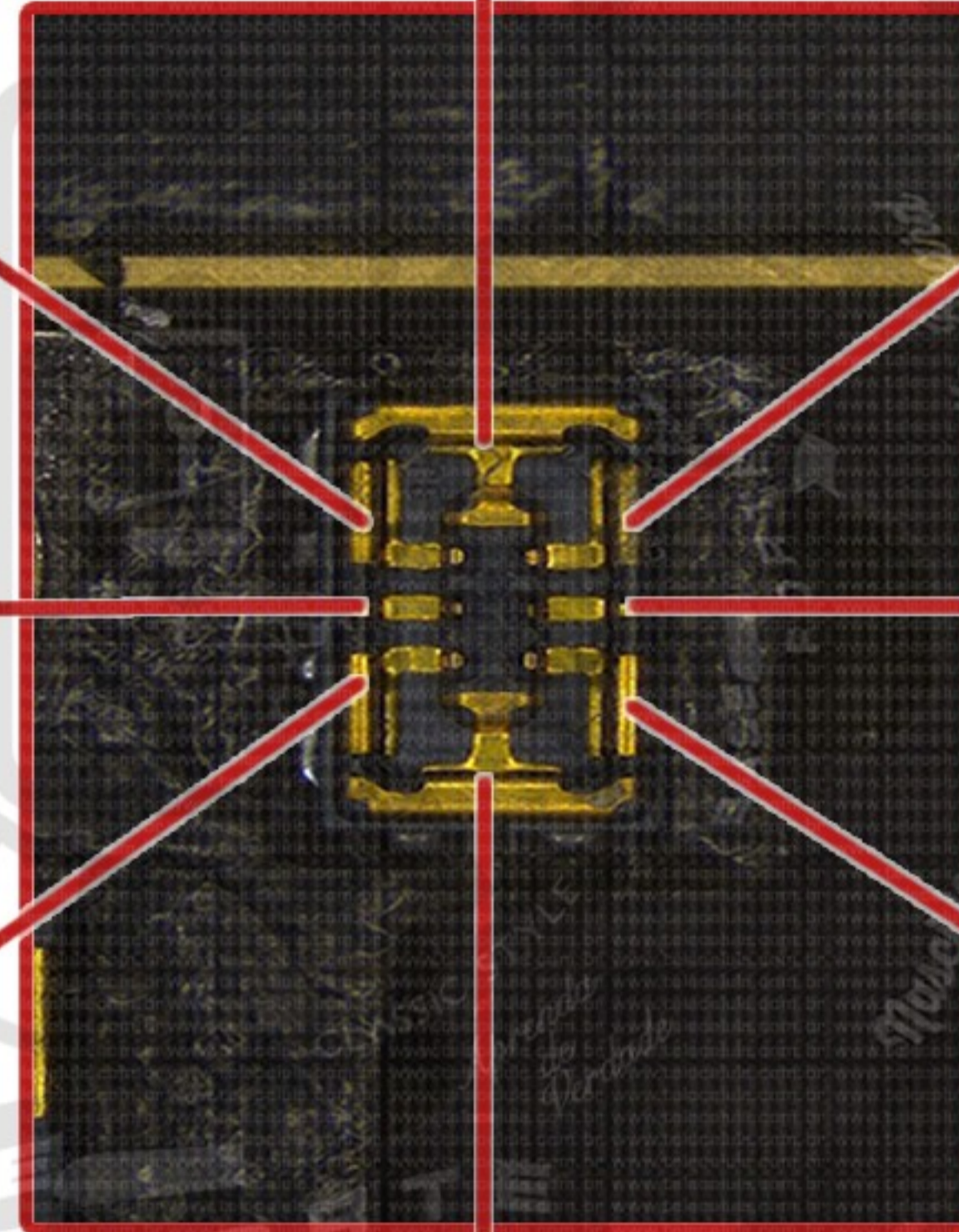
03- 2.01V / 0.34mA

04- 2.01V / 0.34mA

05- 4.00V / 2.80mA

06- 4.00V / 2.80mA

07- 4.00V / 2.80mA



Mascido para reparar Mobile Board

SIM Connector - APPLE IPHONE 14 - SMB

SMB - 20V / 20mA

CALIBRAÇÃO

4.00V / 2.80mA

GND



01- 4.00V / 2.80mA

03- 4.00V / 2.80mA

05- 2.86V / 1.16mA

07- 2.49V / 0.78mA

09- 2.53V / 0.85mA

11- 2.80V / 1.16mA

13- 2.29V / 0.60mA

15- 2.24V / 0.55mA

17- 2.79V / 1.16mA

19- 2.70V / 1.07mA

21- 2.44V / 0.78mA

24- 4.00V / 2.80mA

02- 2.50V / 0.86mA

04- 2.47V / 0.82mA

06- 3.00V / 1.43mA

08- 2.25V / 0.58mA

10- 2.25V / 0.58mA

12- 2.25V / 0.58mA

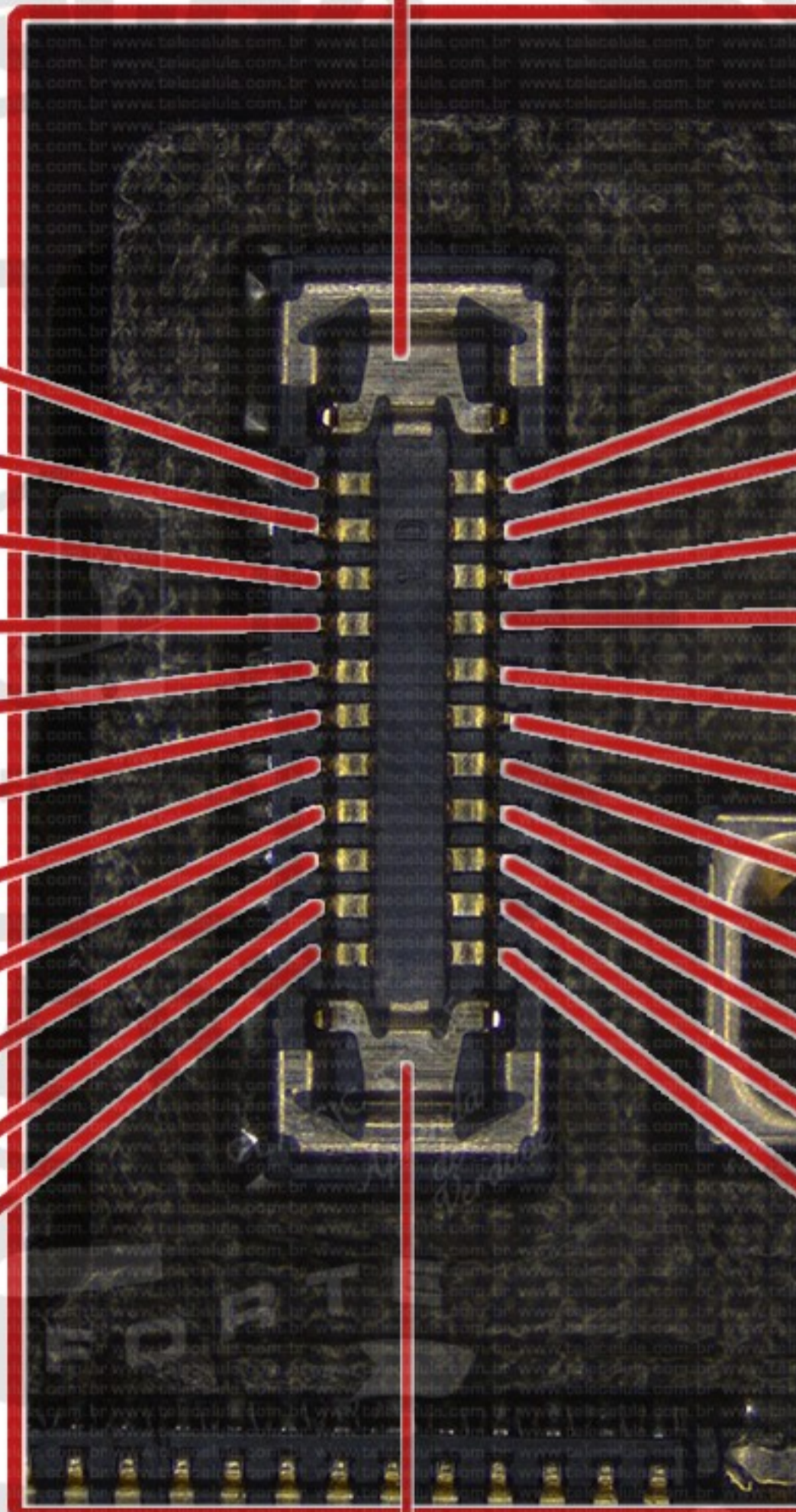
14- 1.99V / 0.30mA

16- 2.77V / 1.19mA

18- 2.15V / 0.47mA

20- 2.38V / 0.74mA

22- 2.45V / 0.82mA



23- 4.00V / 2.80mA

Mascido para reparar Mobile Board

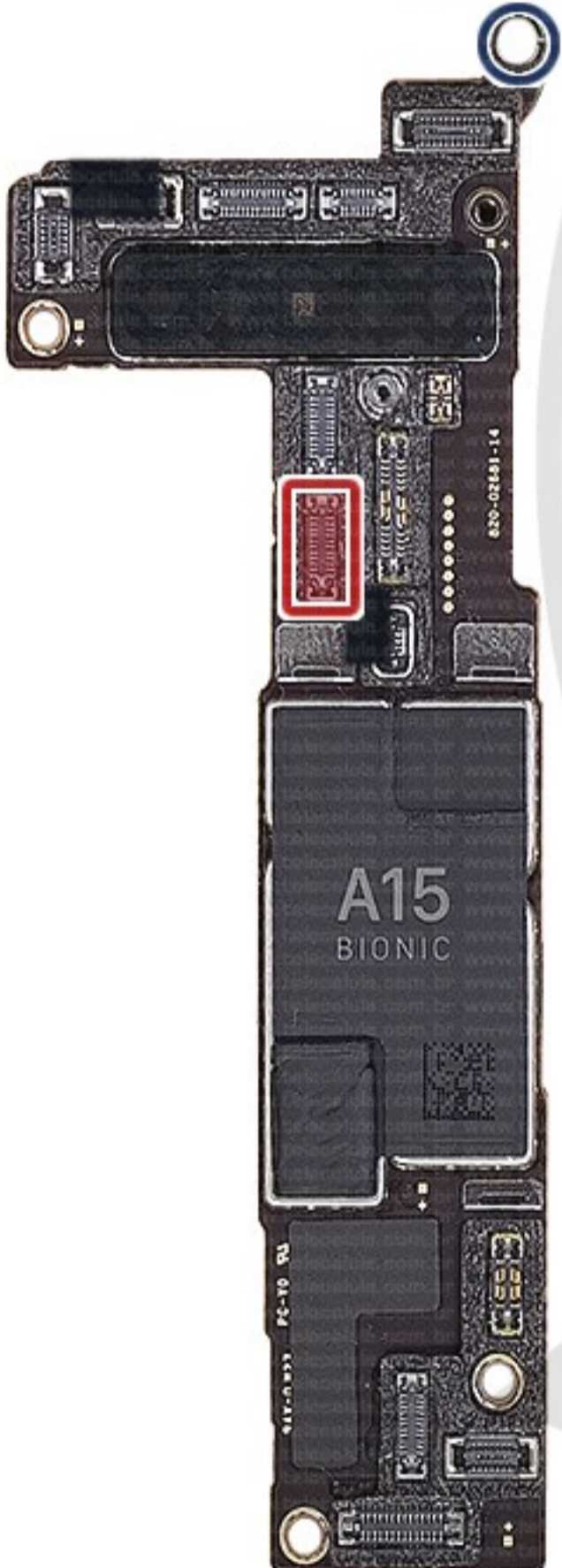
Tele Camera - APPLE IPHONE 14 - SMB

SMB - 20V / 20mA

CALIBRAÇÃO

4.00V / 2.80mA

GND



01- 2.57V / 1.01mA

03- 2.34V / 0.73mA

05- 4.00V / 2.80mA

07- 0.00V / 0.00mA

09- 0.00V / 0.00mA

11- 4.00V / 2.80mA

13- 0.00V / 0.00mA

15- 0.00V / 0.00mA

17- 4.00V / 2.80mA

19- 0.00V / 0.00mA

21- 0.00V / 0.00mA

24- 4.00V / 2.80mA

02- 2.49V / 0.92mA

04- 2.49V / 0.92mA

06- 2.38V / 0.77mA

08- 2.38V / 0.77mA

10- 0.00V / 0.00mA

12- 2.43V / 0.84mA

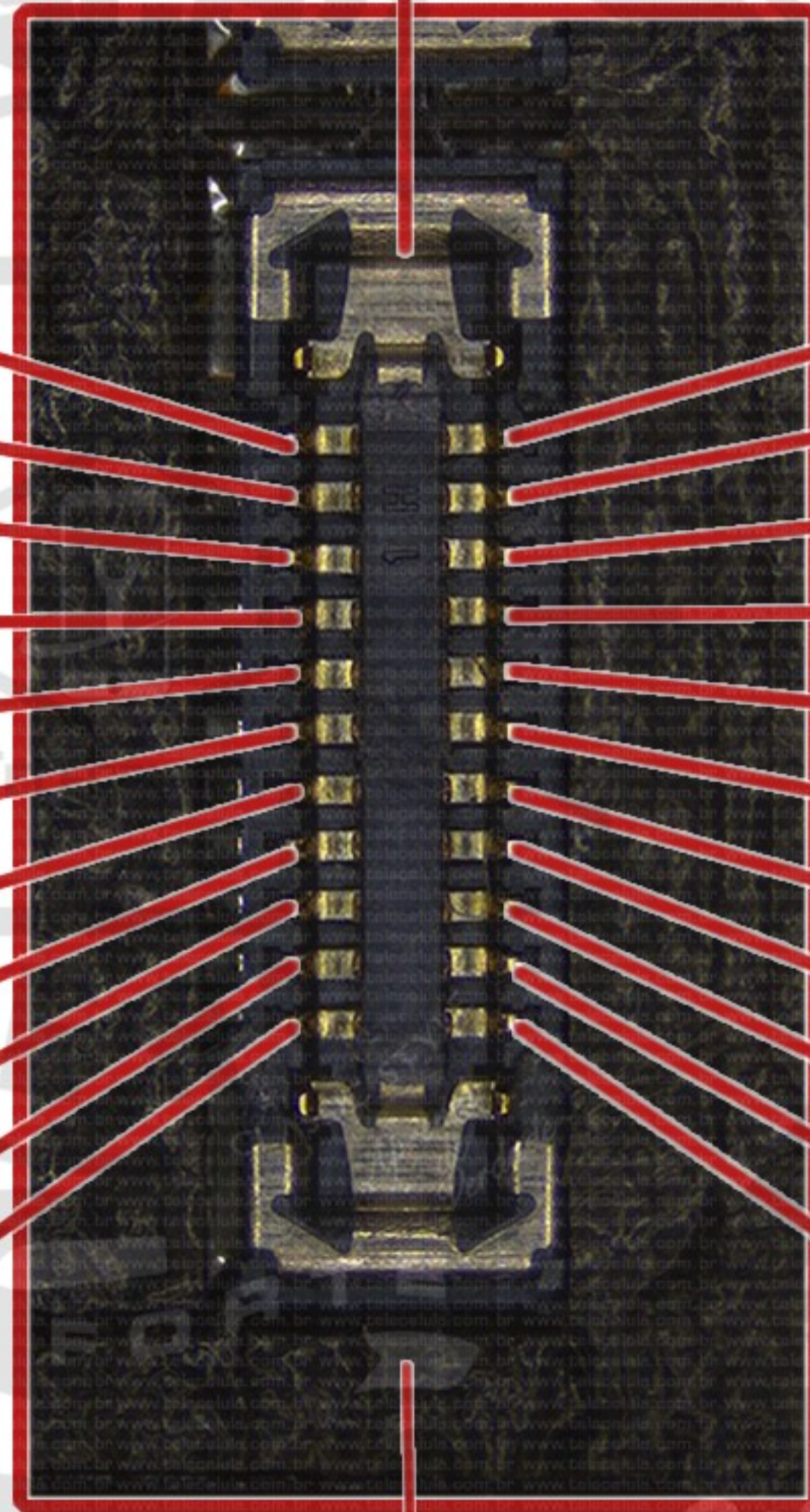
14- 4.00V / 2.80mA

16- 2.56V / 1.00mA

18- 2.54V / 0.97mA

20- 2.70V / 1.17mA

22- 2.70V / 1.17mA



23- 4.00V / 2.80mA

Mascido para reparar Mobile Board

Test Points 1 - APPLE IPHONE 14 - SMB

SMB - 20V / 20mA

CALIBRAÇÃO

4.00V / 2.80mA

GND



01- 2.49V / 0.91mA

03- 1.87V / 0.19mA

05- 4.00V / 2.80mA

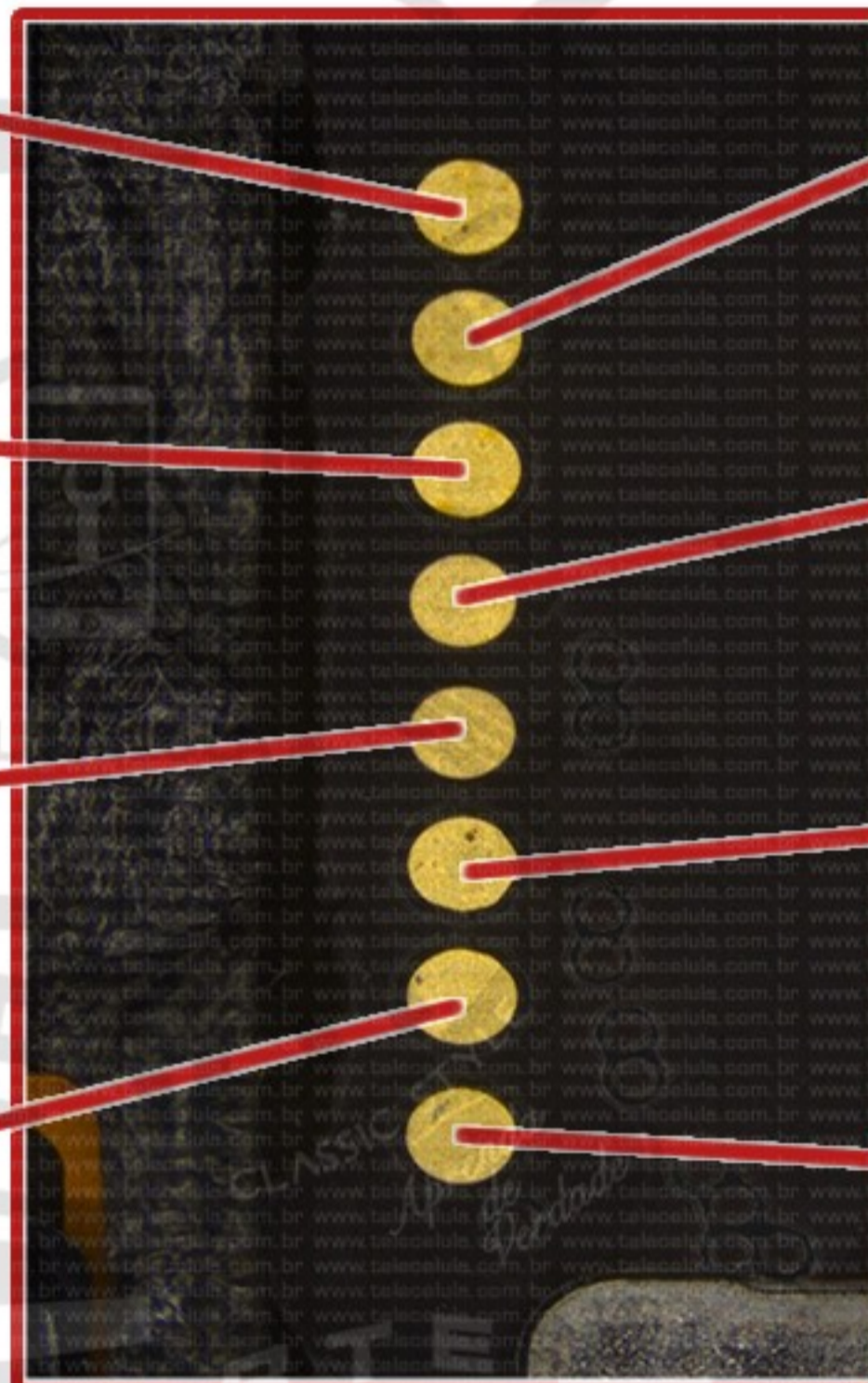
07- 0.00V / 0.00mA

02- 1.69V / 0.04mA

04- 4.00V / 2.80mA

06- 0.00V / 0.00mA

08- 1.87V / 0.19mA



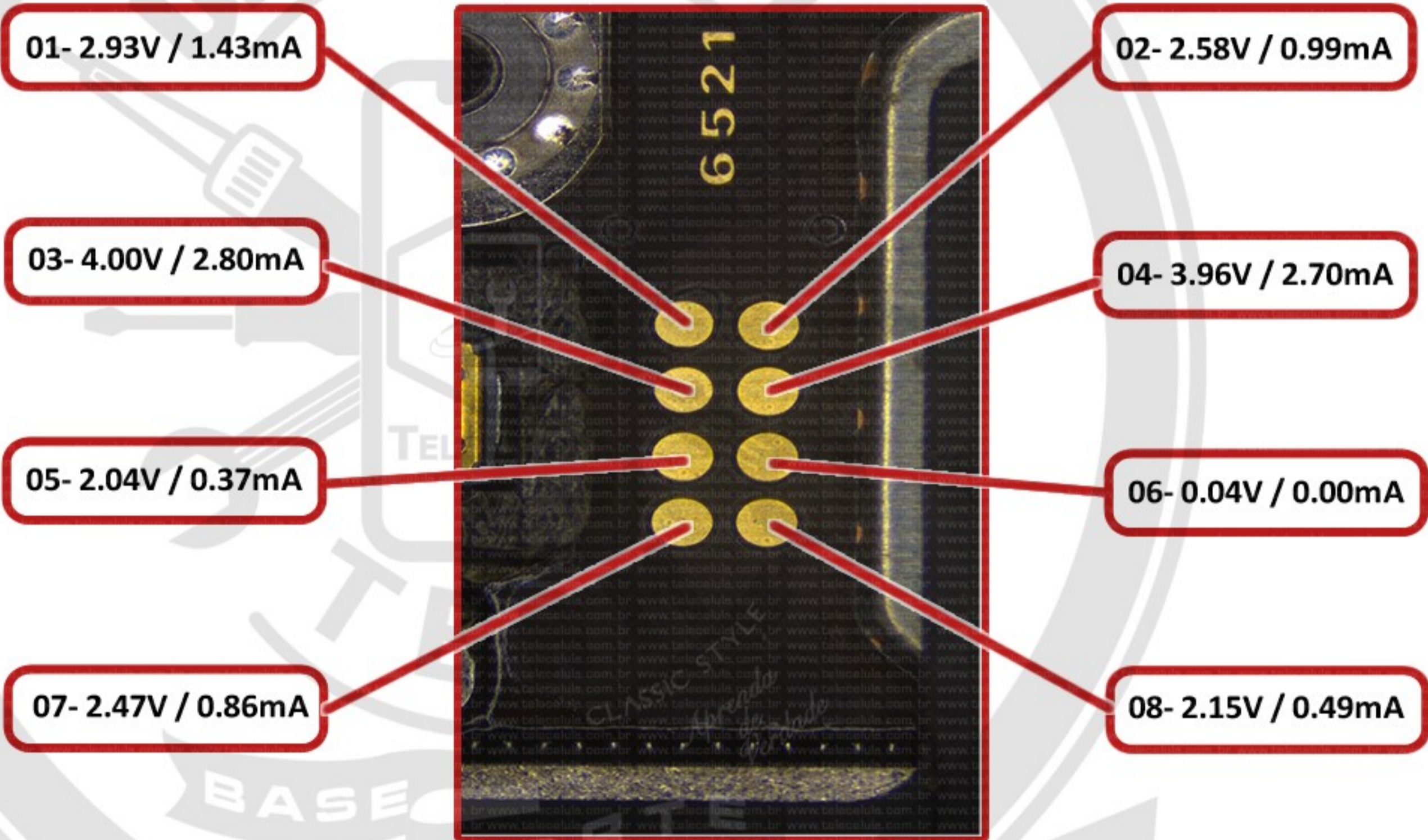
Mascido para reparar Mobile Board

Test Points 2 - APPLE IPHONE 14 - SMB

SMB - 20V / 20mA

CALIBRAÇÃO
4.00V / 2.80mA

GND

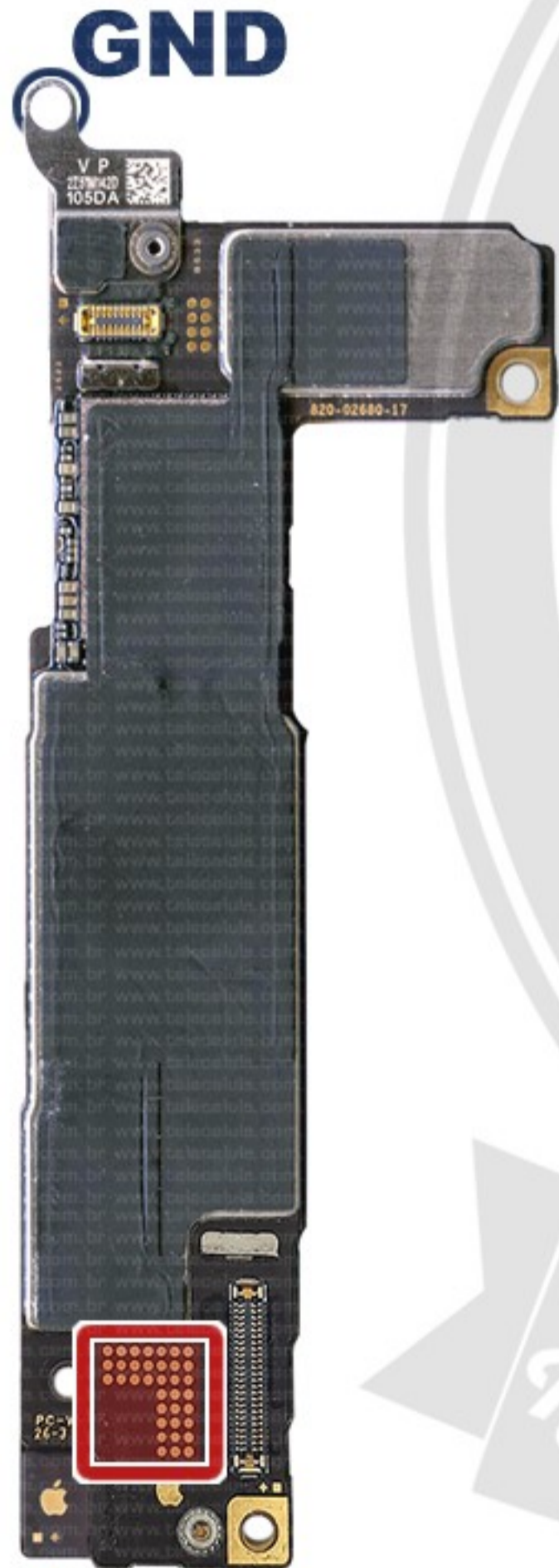


Mascido para reparar Mobile Board

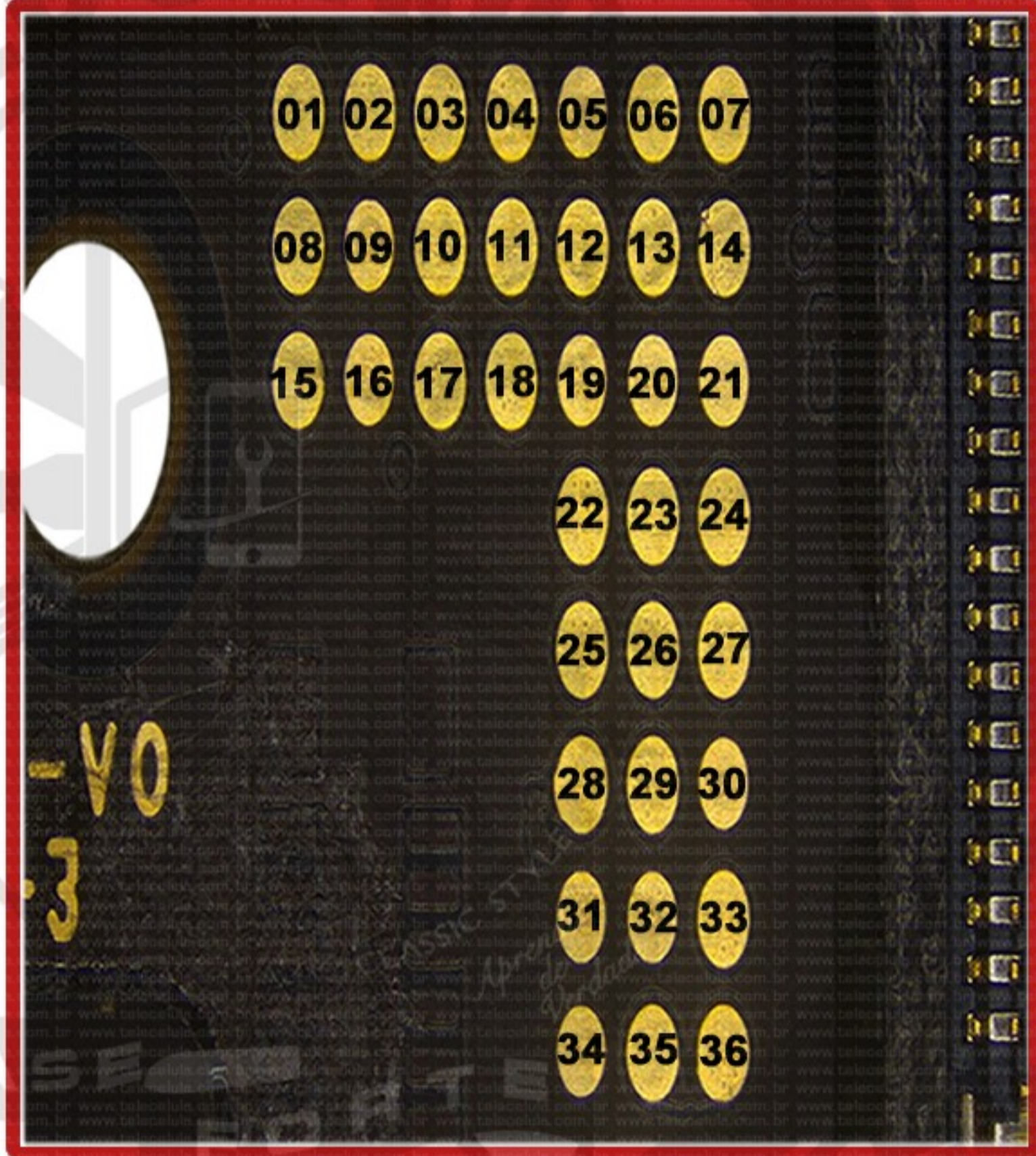
Test Points 3 - APPLE IPHONE 14 - SMB

SMB - 20V / 20mA

CALIBRAÇÃO
4.00V / 2.80mA



- 01- 1.44V / 0.00mA
- 02- 1.44V / 0.00mA
- 03- 2.82V / 1.31mA
- 04- 0.00V / 0.00mA
- 05- 4.00V / 2.80mA
- 06- 2.27V / 0.64mA
- 07- 0.01V / 0.00mA
- 08- 2.15V / 0.50mA
- 09- 4.00V / 2.81mA
- 10- 1.43V / 0.00mA
- 11- 1.43V / 0.00mA
- 12- 2.61V / 1.05mA
- 13- 2.12V / 0.47mA
- 14- 2.94V / 1.46mA
- 15- 4.00V / 2.80mA
- 16- 4.00V / 2.80mA
- 17- 1.43V / 0.00mA
- 18- 1.43V / 0.00mA



- 19- 4.00V / 2.80mA
- 20- 4.00V / 2.80mA
- 21- 1.53V / 0.00mA
- 22- 2.94V / 1.46mA
- 23- 2.94V / 1.46mA
- 24- 1.84V / 0.16mA
- 25- 2.93V / 1.45mA
- 26- 2.93V / 1.45mA
- 27- 1.83V / 0.15mA
- 28- 3.48V / 2.15mA
- 29- 3.41V / 2.05mA
- 30- 4.00V / 2.80mA
- 31- 4.00V / 2.80mA
- 32- 4.00V / 2.80mA
- 33- 2.56V / 1.00mA
- 34- 4.00V / 2.80mA
- 35- 3.00V / 1.54mA
- 36- 3.23V / 1.82mA

Manutenção para reparar Mobile Board

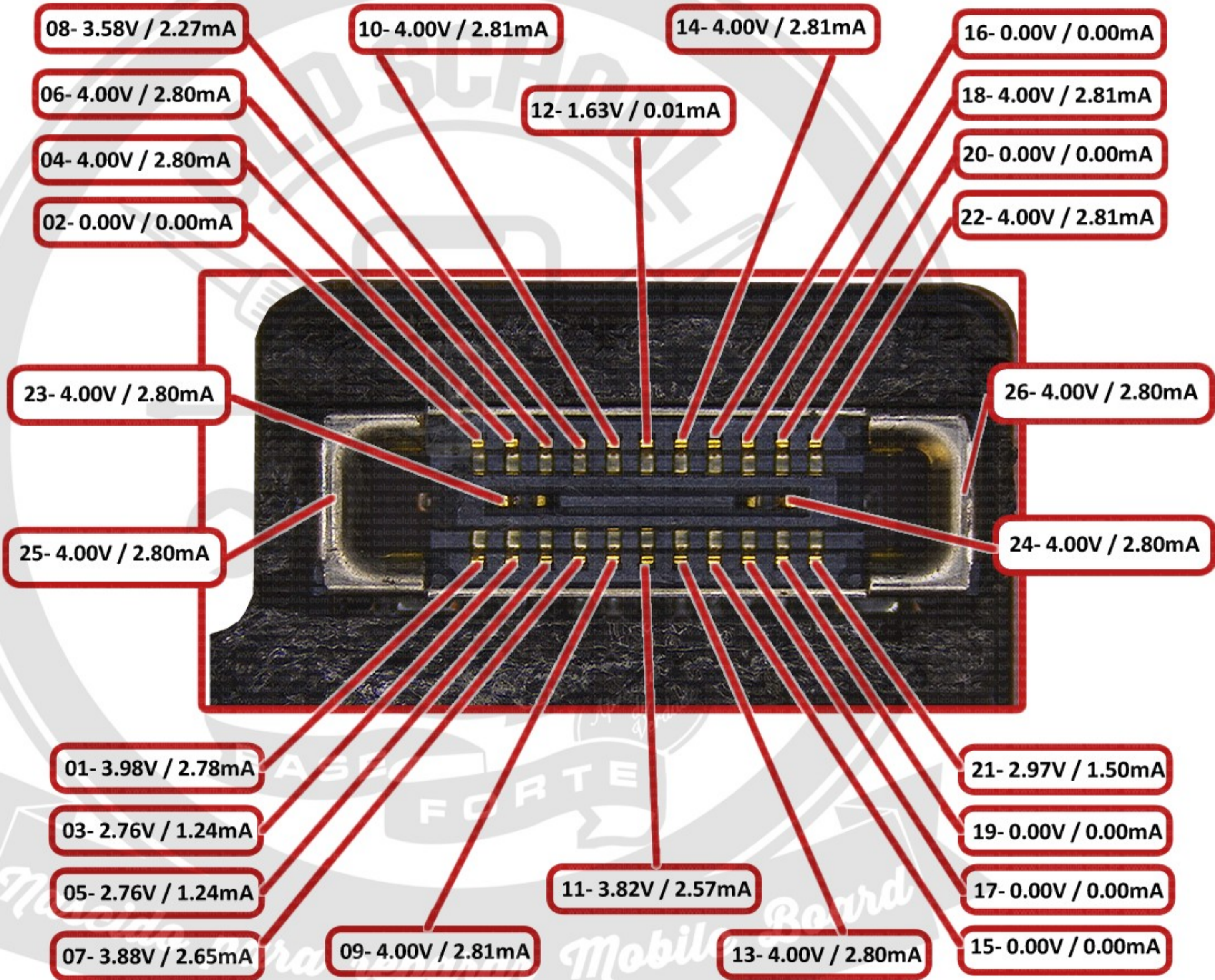
Upper Ant 1 - APPLE IPHONE 14 - SMB

SMB - 20V / 20mA

CALIBRAÇÃO

4.00V / 2.80mA

GND



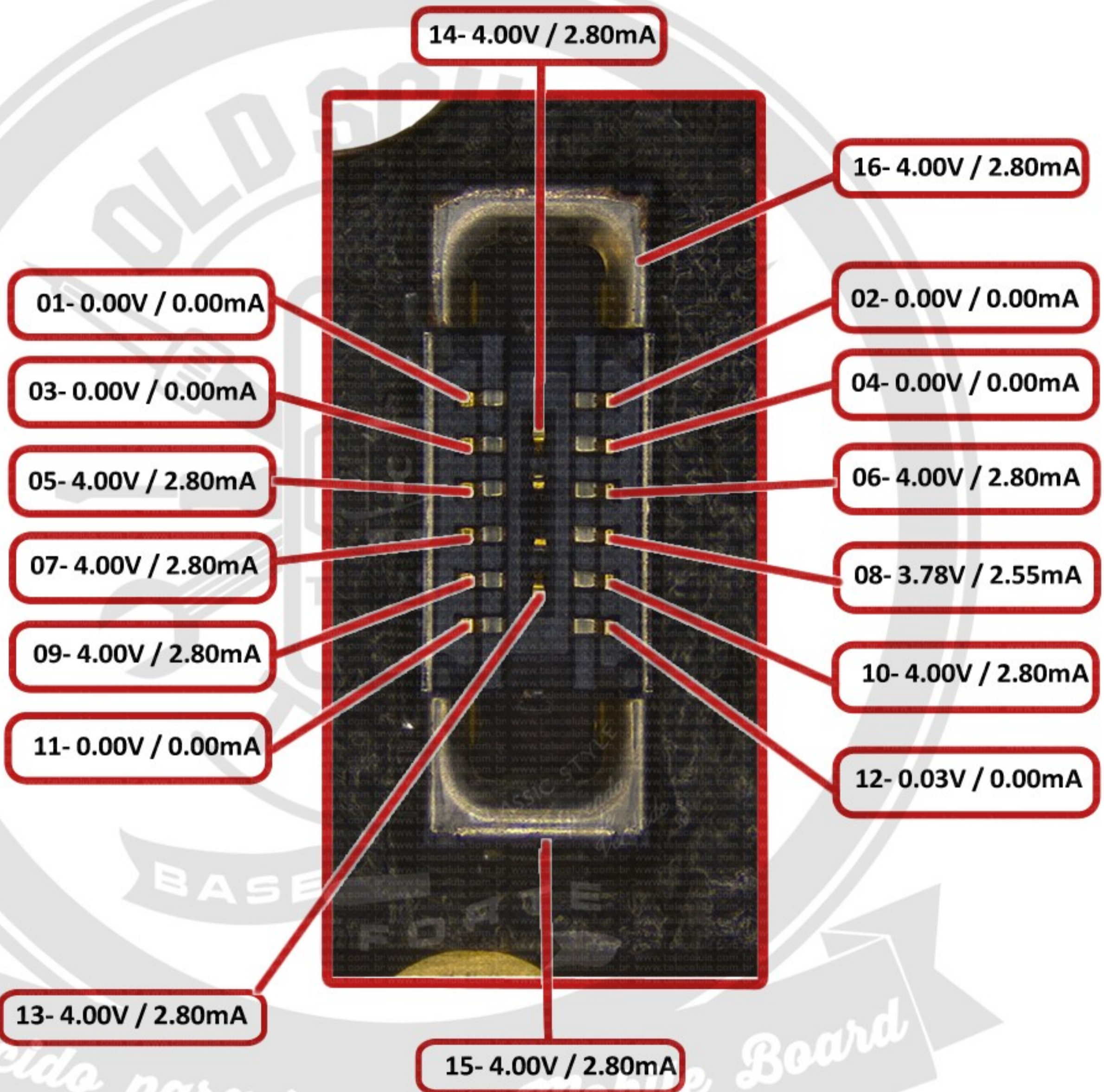
Upper Ant 2 - APPLE IPHONE 14 - SMB

SMB - 20V / 20mA

CALIBRAÇÃO

4.00V / 2.80mA

GND



Mascido para reparar Mobile Board

WCHR Strobe - APPLE IPHONE 14 - SMB

SMB - 20V / 20mA

CALIBRAÇÃO

4.00V / 2.80mA

GND



01- 2.14V / 0.49mA

03- 2.14V / 0.49mA

05- 0.01V / 0.00mA

07- 2.17V / 1.18mA

09- 1.69V / 0.04mA

11- 2.20V / 0.56mA

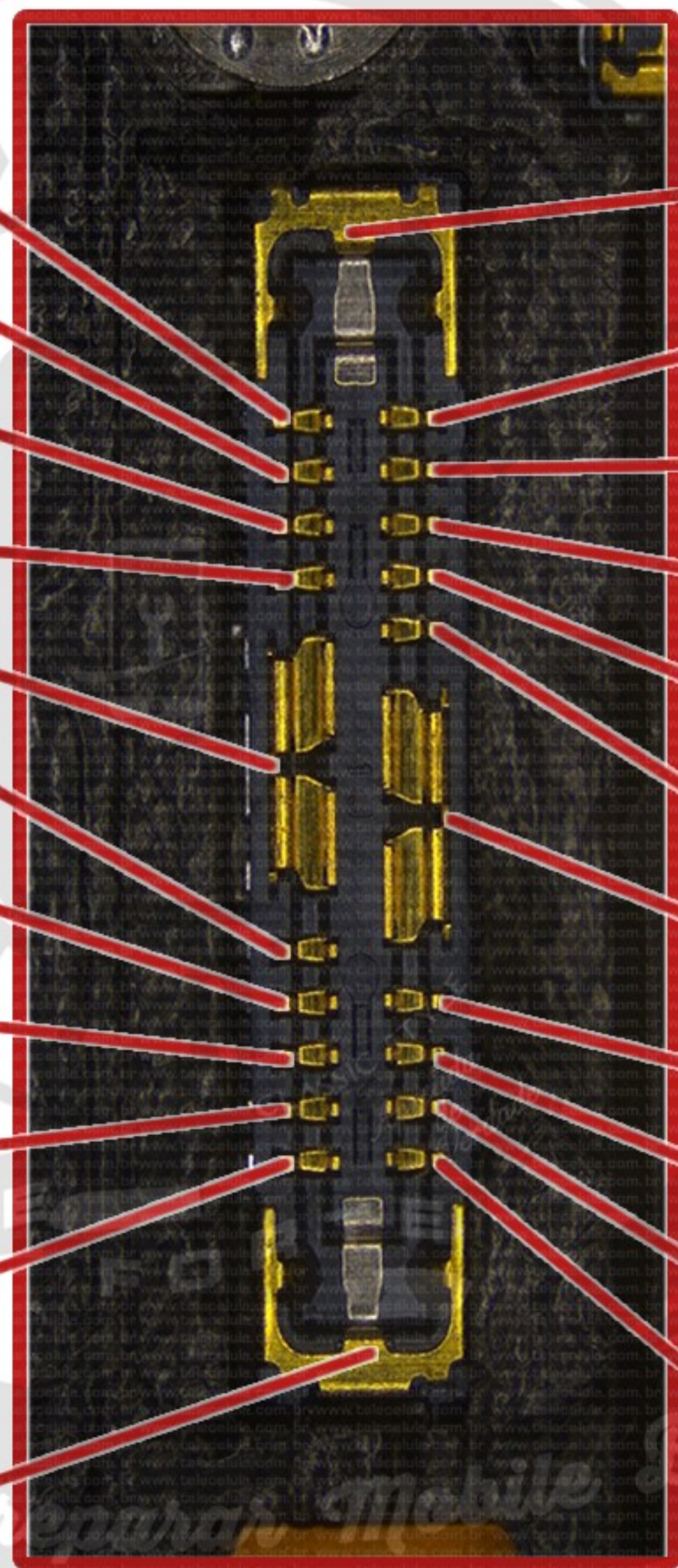
13- 2.77V / 1.26mA

15- 1.52V / 0.00mA

16- 2.24V / 0.60mA

18- 2.24V / 0.60mA

22- 0.00V / 0.00mA



21- 4.00V / 2.80mA

02- 2.24V / 0.60mA

04- 2.24V / 0.60mA

06- 2.57V / 1.01mA

08- 2.49V / 0.91mA

10- 2.49V / 0.91mA

12- 1.87V / 0.19mA

14- 2.41V / 0.82mA

16- 4.00V / 2.80mA

18- 0.00V / 0.00mA

20- 0.00V / 0.00mA

Wide Cam - APPLE IPHONE 14 - SMB

SMB - 20V / 20mA

CALIBRAÇÃO

4.00V / 2.80mA

GND



01- 0.00V / 0.00mA

03- 0.00V / 0.00mA

05- 4.00V / 2.80mA

07- 0.00V / 0.00mA

09- 0.00V / 0.00mA

11- 4.00V / 2.80mA

13- 0.00V / 0.00mA

15- 0.00V / 0.00mA

17- 4.00V / 2.80mA

19- 2.57V / 1.01mA

21- 2.50V / 0.92mA

23- 4.00V / 2.80mA

02- 2.48V / 0.91mA

04- 2.54V / 0.97mA

06- 4.00V / 2.80mA

08- 2.43V / 0.84mA

10- 2.38V / 0.77mA

12- 2.38V / 0.77mA

14- 4.00V / 2.80mA

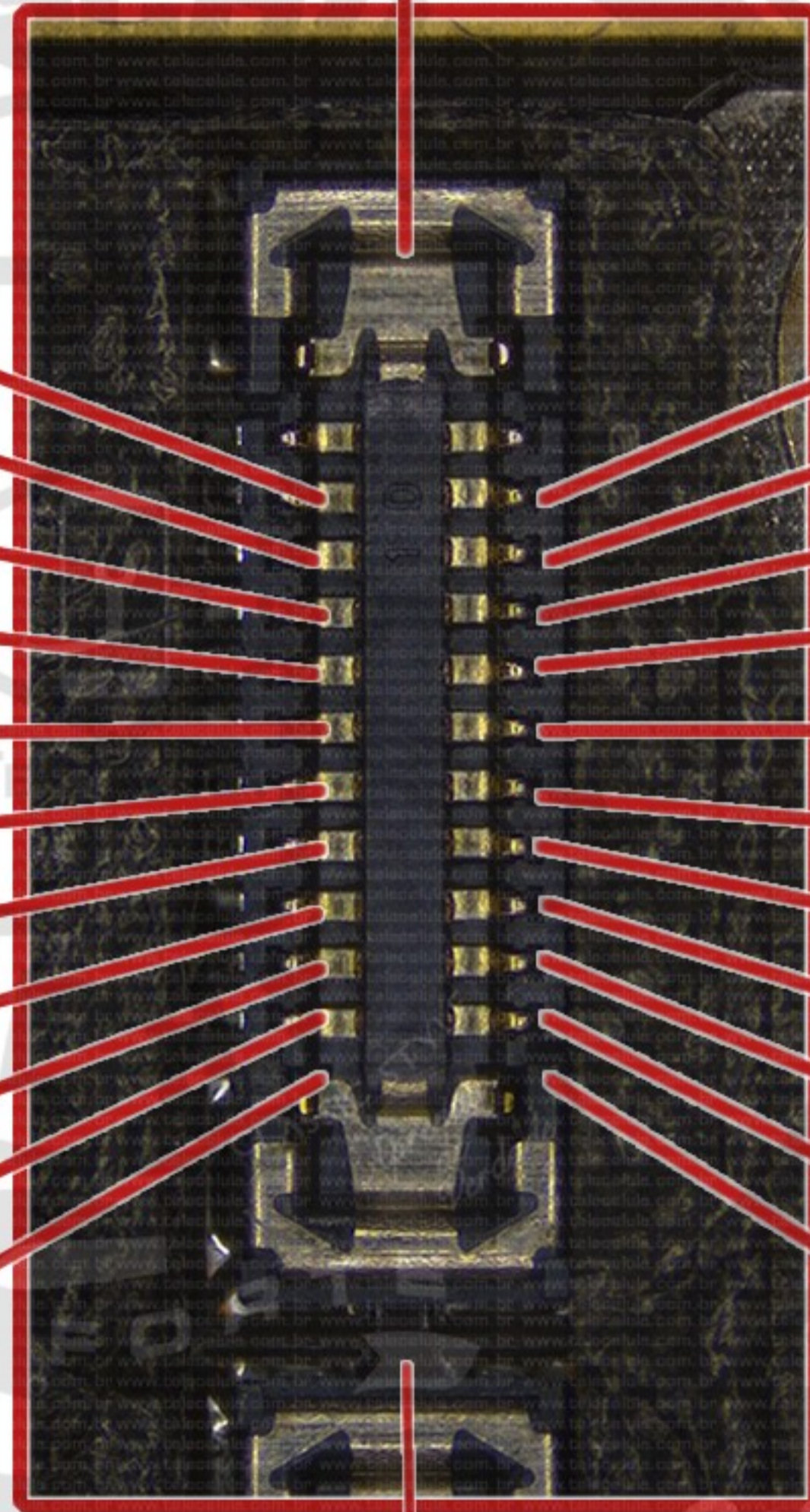
16- 0.00V / 0.00mA

18- 4.00V / 2.80mA

20- 2.56V / 1.00mA

22- 2.48V / 0.90mA

24- 2.95V / 1.49mA



Mascido para reparar Mobile Board